

H6PD Rabbit Polyclonal Antibody



CAB6440

Product Information

Size:

20uL, 50uL, 100uL, 200uL

Observed MW:

89kDa

Calculated MW:

88kDa

Applications:

WB IHC IF

Reactivity:

Human, Mouse, Rat

Protein Background

There are 2 forms of glucose-6-phosphate dehydrogenase. G form is X-linked and H form, encoded by this gene, is autosomally linked. This H form shows activity with other hexose-6-phosphates, especially galactose-6-phosphate, whereas the G form is specific for glucose-6-phosphate. Both forms are present in most tissues, but H form is not found in red cells.

Immunogen information

Gene ID:

9563

Uniprot

O95479

Synonyms:

H6PD; CORTRD1; G6PDH; GDH

Antibody Information

Recommended dilutions:

WB 1:500 - 1:2000 IHC 1:50
- 1:200 IF 1:10 - 1:100

Source:

Rabbit

Isotype:

IgG

Purification:

Affinity purification

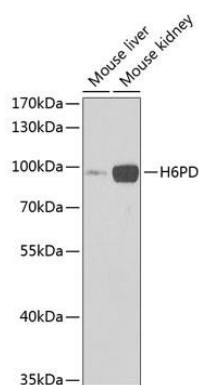
Immunogen:

Recombinant fusion protein containing a sequence corresponding to amino acids 20-200 of human H6PD (NP_004276.2).

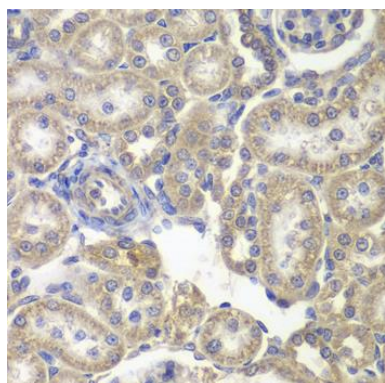
Storage:

Store at -20°C. Avoid freeze / thaw cycles. Buffer: PBS with 0.02% sodium azide, 50% glycerol, pH7.3.

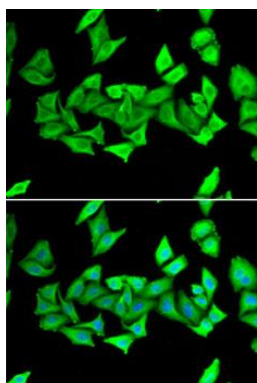
Product Images



Western blot analysis of extracts of various cell lines, using H6PD Antibody (CAB6440) at 1:1000 dilution. Secondary antibody: HRP Goat Anti-Rabbit IgG (H+L) (CABS014) at 1:10000 dilution. Lysates/proteins: 25ug per lane. Blocking buffer: 3% nonfat dry milk in TBST. Detection: ECL Enhanced Kit (CABM00021). Exposure time: 90s.



Immunohistochemistry of paraffin-embedded rat kidney using H6PD antibody (CAB6440) at dilution of 1:200 (40x lens).



Immunofluorescence analysis of U2OS cells using H6PD antibody (CAB6440). Blue: DAPI for nuclear staining.