

# IL18BP Rabbit Polyclonal Antibody



CAB6445

## Product Information

### Size:

20uL, 50uL, 100uL, 200uL

### Observed MW:

38kDa

### Calculated MW:

12kDa/17kDa/21kDa

### Applications:

WB, IHC, IF

### Reactivity:

Human, Mouse

## Protein Background

The protein encoded by this gene functions as an inhibitor of the proinflammatory cytokine, IL18. It binds IL18, prevents the binding of IL18 to its receptor, and thus inhibits IL18-induced IFN-gamma production, resulting in reduced T-helper type 1 immune responses. This protein is constitutively expressed and secreted in mononuclear cells. Elevated level of this protein is detected in the intestinal tissues of patients with Crohn's disease. Alternatively spliced transcript variants encoding different isoforms have been described for this gene.

## Immunogen information

### Gene ID:

10068

### Uniprot

O95998

### Synonyms:

IL18BP; IL18BPa

## Antibody Information

### Recommended dilutions:

WB 1:500 - 1:2000

IHC 1:50 - 1:100

IF 1:50 - 1:100

### Source:

Rabbit

### Isotype:

IgG

### Purification:

Affinity purification

### Immunogen:

Recombinant fusion protein containing a sequence corresponding to amino acids 31-194 of human IL18BP (NP\_001138529.1).

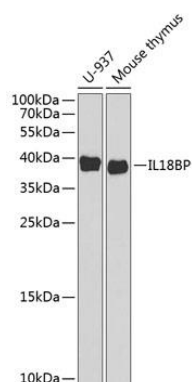
### Storage:

Store at -20°C. Avoid freeze / thaw cycles.

Buffer: PBS with 0.02% sodium azide, 50% glycerol, pH7.3.

## Product Images

---



Western blot analysis of extracts of various cell lines, using IL18BP antibody (CAB6445) at 1:1000 dilution.

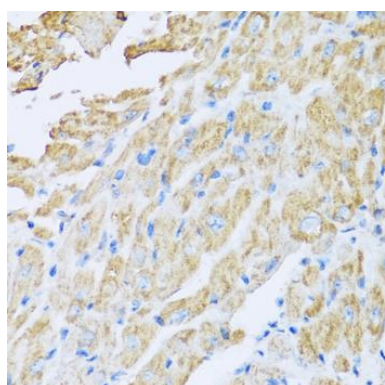
Secondary antibody: HRP Goat Anti-Rabbit IgG (H+L) (CABS014) at 1:10000 dilution.

Lysates/proteins: 25ug per lane.

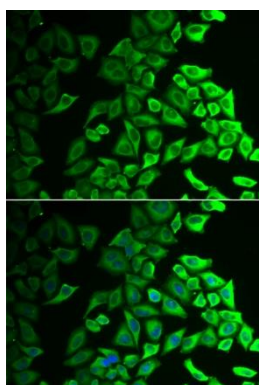
Blocking buffer: 3% non-fat dry milk in TBST.

Detection: ECL Basic Kit (AbGn00020).

Exposure time: 90s.



Immunohistochemistry of paraffin-embedded mouse heart using IL18BP antibody (CAB6445) at dilution of 1:100 (40x lens).



Immunofluorescence analysis of A549 cells using IL18BP antibody (CAB6445).

Blue: DAPI for nuclear staining.