

DHRS2 Rabbit Polyclonal Antibody



CAB6446

Product Information

Size:

20uL, 50uL, 100uL, 200uL

Observed MW:

30-35kDa

Calculated MW:

29kDa/31kDa

Applications:

WB IHC IF

Reactivity:

Human, Mouse, Rat

Protein Background

This gene encodes a member of the short-chain dehydrogenases/reductases (SDR) family, which has over 46,000 members. Members of this family are enzymes that metabolize many different compounds, such as steroid hormones, prostaglandins, retinoids, lipids and xenobiotics. Alternative promoter use and alternative splicing results in multiple transcript variants.

Immunogen information

Gene ID:

10202

Uniprot

Q13268

Synonyms:

DHRS2; HEP27; SDR25C1

Antibody Information

Recommended dilutions:

WB 1:500 - 1:2000 IHC 1:50
- 1:200 IF 1:10 - 1:100

Source:

Rabbit

Isotype:

IgG

Purification:

Affinity purification

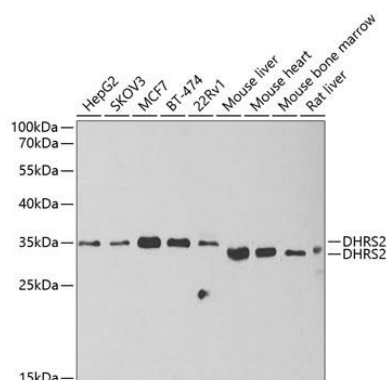
Immunogen:

Recombinant fusion protein containing a sequence corresponding to amino acids 1-300 of human DHRS2 (NP_878912.1).

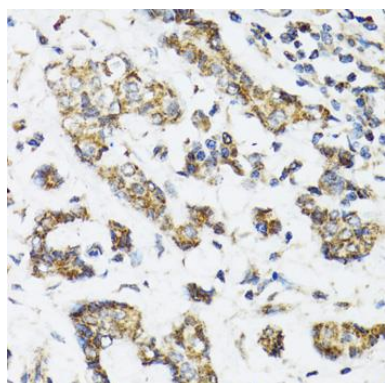
Storage:

Store at -20°C. Avoid freeze / thaw cycles. Buffer: PBS with 0.02% sodium azide, 50% glycerol, pH7.3.

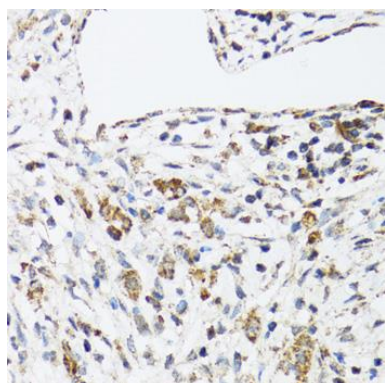
Product Images



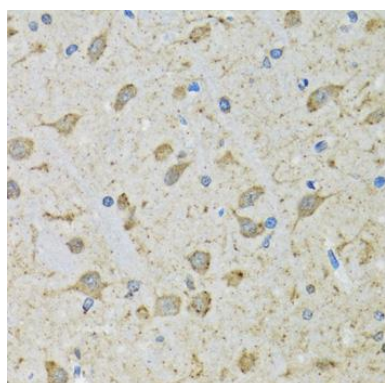
Western blot analysis of extracts of various cell lines, using DHR2 antibody (CAB6446) at 1:1000 dilution. Secondary antibody: HRP Goat Anti-Rabbit IgG (H+L) (CABS014) at 1:10000 dilution. Lysates/proteins: 25ug per lane. Blocking buffer: 3% nonfat dry milk in TBST. Detection: ECL Basic Kit (CABM00020). Exposure time: 90s.



Immunohistochemistry of paraffin-embedded human breast cancer using DHR2 antibody (CAB6446) at dilution of 1:100 (40x lens).



Immunohistochemistry of paraffin-embedded human uterine cancer using DHR2 antibody (CAB6446) at dilution of 1:100 (40x lens).



Immunohistochemistry of paraffin-embedded mouse brain using DHR2 antibody (CAB6446) at dilution of 1:100 (40x lens).