

# PAICS Rabbit Polyclonal Antibody



CAB6450

## Product Information

### Size:

20uL, 50uL, 100uL, 200uL

### Observed MW:

47kDa

### Calculated MW:

47kDa

### Applications:

WB IHC IF

### Reactivity:

Human, Rat

## Protein Background

This gene encodes a bifunctional enzyme containing phosphoribosylaminoimidazole carboxylase activity in its N-terminal region and phosphoribosylaminoimidazole succinocarboxamide synthetase in its C-terminal region. It catalyzes steps 6 and 7 of purine biosynthesis. The gene is closely linked and divergently transcribed with a locus that encodes an enzyme in the same pathway, and transcription of the two genes is coordinately regulated. The human genome contains several pseudogenes of this gene. Multiple transcript variants encoding different isoforms have been found for this gene.

## Immunogen information

### Gene ID:

10606

### Uniprot

P22234

### Synonyms:

PAICS; ADE2; ADE2H1; AIRC; PAIS

## Antibody Information

### Recommended dilutions:

WB 1:500 - 1:2000 IHC 1:50  
- 1:200 IF 1:10 - 1:100

### Source:

Rabbit

### Isotype:

IgG

### Purification:

Affinity purification

### Immunogen:

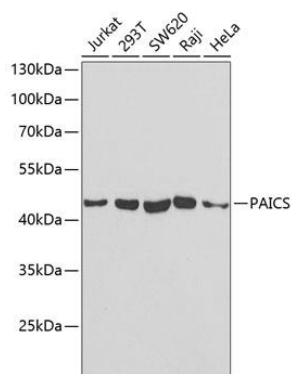
Recombinant fusion protein containing a sequence corresponding to amino acids 176-425 of human PAICS (NP\_001072992.1).

### Storage:

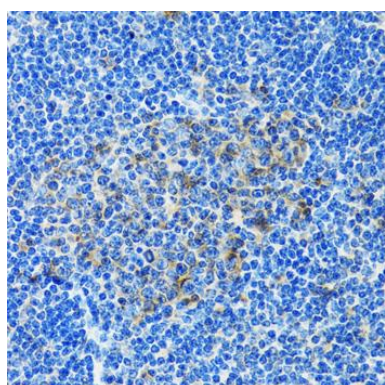
Store at -20°C. Avoid freeze / thaw cycles. Buffer: PBS with 0.02% sodium azide, 50% glycerol, pH7.3.

## Product Images

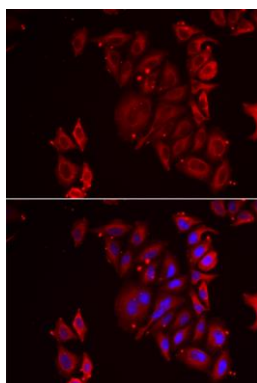
---



Western blot analysis of extracts of various cell lines, using PAICS antibody (CAB6450) at 1:1000 dilution. Secondary antibody: HRP Goat Anti-Rabbit IgG (H+L) (CABS014) at 1:10000 dilution. Lysates/proteins: 25ug per lane. Blocking buffer: 3% nonfat dry milk in TBST. Detection: ECL Basic Kit (CABM00020). Exposure time: 30s.



Immunohistochemistry of paraffin-embedded rat spleen using PAICS antibody (CAB6450) at dilution of 1:100 (40x lens).



Immunofluorescence analysis of U2OS cells using PAICS antibody (CAB6450). Blue: DAPI for nuclear staining.