

# SPAG5 Rabbit Polyclonal Antibody



CAB6451

---

## Product Information

### Size:

20uL, 50uL, 100uL, 200uL

### Observed MW:

### Calculated MW:

134kDa

### Applications:

IF

### Reactivity:

Human

## Antibody Information

### Recommended dilutions:

IF 1:20 - 1:50

### Source:

Rabbit

### Isotype:

IgG

### Purification:

Affinity purification

## Protein Background

This gene encodes a protein associated with the mitotic spindle apparatus. The encoded protein may be involved in the functional and dynamic regulation of mitotic spindles.

## Immunogen information

### Gene ID:

10615

### Uniprot

Q96R06

### Synonyms:

SPAG5; DEEPEST; MAP126; hMAP126

### Immunogen:

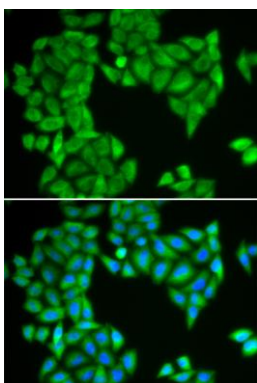
Recombinant fusion protein containing a sequence corresponding to amino acids 1-300 of human SPAG5 (NP\_006452.3).

### Storage:

Store at -20°C. Avoid freeze / thaw cycles. Buffer: PBS with 0.02% sodium azide, 50% glycerol, pH7.3.

## Product Images

---



Immunofluorescence analysis of HeLa cells using SPAG5 antibody (CAB6451). Blue: DAPI for nuclear staining.