

# AIPL1 Rabbit Polyclonal Antibody



CAB6458

## Product Information

### Size:

20uL, 50uL, 100uL, 200uL

### Observed MW:

40-45kDa

### Calculated MW:

36kDa/40kDa/41kDa/43kDa

### Applications:

WB IHC IF

### Reactivity:

Human, Mouse

## Antibody Information

### Recommended dilutions:

WB 1:500 - 1:2000 IHC 1:50  
- 1:100 IF 1:50 - 1:100

### Source:

Rabbit

### Isotype:

IgG

### Purification:

Affinity purification

## Protein Background

Leber congenital amaurosis (LCA) is the most severe inherited retinopathy with the earliest age of onset and accounts for at least 5% of all inherited retinal diseases. Affected individuals are diagnosed at birth or in the first few months of life with nystagmus, severely impaired vision or blindness and an abnormal or flat electroretinogram. The photoreceptor/pineal-expressed gene, AIPL1, encoding aryl-hydrocarbon interacting protein-like 1, is located within the LCA4 candidate region. The encoded protein contains three tetratricopeptide motifs, consistent with chaperone or nuclear transport activity. Mutations in this gene may cause approximately 20% of recessive LCA. Alternative splicing results in multiple transcript variants.

## Immunogen information

### Gene ID:

23746

### Uniprot

Q9NZN9

### Synonyms:

AIPL1; AIPL2; LCA4

### Immunogen:

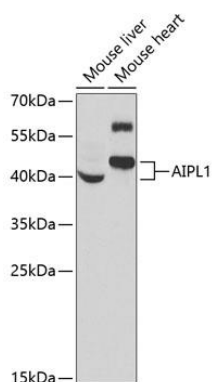
Recombinant fusion protein containing a sequence corresponding to amino acids 1-384 of human AIPL1 (NP\_055151.3).

### Storage:

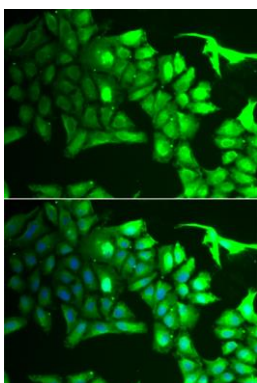
Store at -20°C. Avoid freeze / thaw cycles. Buffer: PBS with 0.02% sodium azide, 50% glycerol, pH7.3.

## Product Images

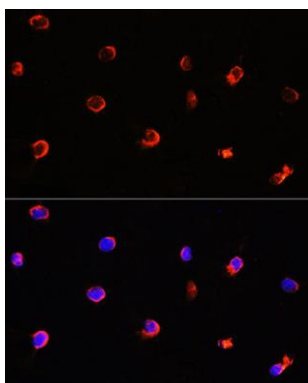
---



Western blot analysis of extracts of various cell lines, using AIPL1 antibody (CAB6458) at 1:1000 dilution. Secondary antibody: HRP Goat Anti-Rabbit IgG (H+L) (CABS014) at 1:10000 dilution. Lysates/proteins: 25ug per lane. Blocking buffer: 3% nonfat dry milk in TBST. Detection: ECL Basic Kit (CABM00020). Exposure time: 90s.



Immunofluorescence analysis of HeLa cells using AIPL1 antibody (CAB6458). Blue: DAPI for nuclear staining.



Immunofluorescence analysis of Y79 cells using AIPL1 antibody (CAB6458) at dilution of 1:100. Blue: DAPI for nuclear staining.