

# NRBF2 Rabbit Polyclonal Antibody



CAB6462

---

## Product Information

### Size:

20uL, 50uL, 100uL, 200uL

### Observed MW:

38KDa

### Calculated MW:

26kDa/31kDa/32kDa

### Applications:

WB IF

### Reactivity:

Human, Mouse, Rat

## Antibody Information

### Recommended dilutions:

WB 1:500 - 1:2000 IF 1:10 - 1:100

### Source:

Rabbit

### Isotype:

IgG

### Purification:

Affinity purification

## Protein Background

### Immunogen information

#### Gene ID:

29982

#### Uniprot

Q96F24

#### Synonyms:

NRBF2; COPR; COPR1; COPR2; NRBF-2

#### Immunogen:

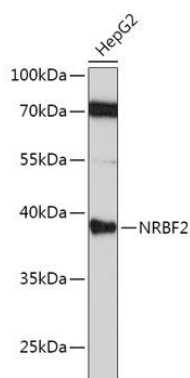
Recombinant fusion protein containing a sequence corresponding to amino acids 10-220 of human NRBF2 (NP\_110386.2).

#### Storage:

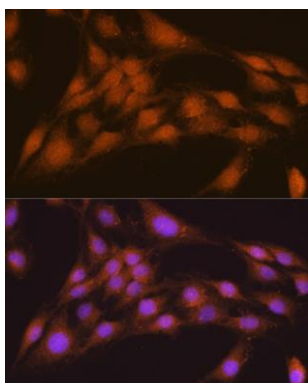
Store at -20°C. Avoid freeze / thaw cycles. Buffer: PBS with 0.02% sodium azide, 50% glycerol, pH7.3.

## Product Images

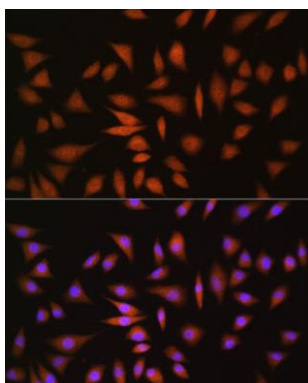
---



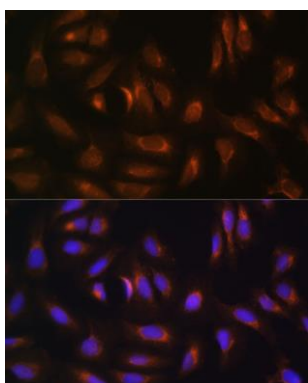
Western blot analysis of extracts of HepG2 cells, using NRBF2 antibody (CAB6462) at 1:1000 dilution. Secondary antibody: HRP Goat Anti-Rabbit IgG (H+L) (CABS014) at 1:10000 dilution. Lysates/proteins: 25ug per lane. Blocking buffer: 3% nonfat dry milk in TBST. Detection: ECL Basic Kit (CABM00020). Exposure time: 3min.



Immunofluorescence analysis of C6 cells using NRBF2 antibody (CAB6462) at dilution of 1:100. Blue: DAPI for nuclear staining.



Immunofluorescence analysis of L929 cells using NRBF2 antibody (CAB6462) at dilution of 1:100. Blue: DAPI for nuclear staining.



Immunofluorescence analysis of U-2 OS cells using NRBF2 antibody (CAB6462) at dilution of 1:100. Blue: DAPI for nuclear staining.