

DUSP13 Rabbit Polyclonal Antibody



CAB6464

Product Information

Size:

20uL, 50uL, 100uL, 200uL

Observed MW:

36kDa

Calculated MW:

6kDa/7kDa/9kDa/17kDa/20kDa/22kDa/27kDa

Applications:

WB IHC

Reactivity:

Mouse, Rat

Antibody Information

Recommended dilutions:

WB 1:500 - 1:2000 IHC 1:50 - 1:200

Source:

Rabbit

Isotype:

IgG

Purification:

Affinity purification

Protein Background

Members of the protein-tyrosine phosphatase superfamily cooperate with protein kinases to regulate cell proliferation and differentiation. This superfamily is separated into two families based on the substrate that is dephosphorylated. One family, the dual specificity phosphatases (DSPs) acts on both phosphotyrosine and phosphoserine/threonine residues. This gene encodes different but related DSP proteins through the use of non-overlapping open reading frames, alternate splicing, and presumed different transcription promoters. Expression of the distinct proteins from this gene has been found to be tissue specific and the proteins may be involved in postnatal development of specific tissues. A protein encoded by the upstream ORF was found in skeletal muscle, whereas the encoded protein from the downstream ORF was found only in testis. In mouse, a similar pattern of expression was found. Multiple alternatively spliced transcript variants were described, but the full-length sequence of only some were determined.

Immunogen information

Gene ID:

51207

Uniprot

Q6B811/Q9UII6

Synonyms:

DUSP13; BEDP; DUSP13A; DUSP13B; MDSP; SKRP4; TMDP

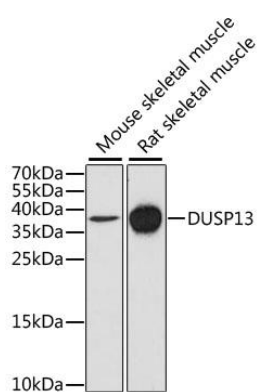
Immunogen:

Recombinant fusion protein containing a sequence corresponding to amino acids 1-198 of human DUSP13 (NP_057448.3).

Storage:

Store at -20°C. Avoid freeze / thaw cycles. Buffer: PBS with 0.02% sodium azide, 50% glycerol, pH7.3.

Product Images



Western blot analysis of extracts of various cell lines, using DUSP13 antibody (CAB6464) at 1:1000 dilution. Secondary antibody: HRP Goat Anti-Rabbit IgG (H+L) (CABS014) at 1:10000 dilution. Lysates/proteins: 25ug per lane. Blocking buffer: 3% nonfat dry milk in TBST. Detection: ECL Basic Kit (CABM00020). Exposure time: 90s.