

# KRBOX4 Rabbit Polyclonal Antibody



CAB6471

## Product Information

### Size:

20uL, 50uL, 100uL, 200uL

### Observed MW:

20kDa

### Calculated MW:

11kDa/19kDa/20kDa

### Applications:

WB IHC

### Reactivity:

Human, Mouse

## Protein Background

This encodes a zinc finger protein with an N-terminal KRAB (Kruppel-associated) domain found in transcriptional repressors. This gene is located in a region of the X chromosome thought to be involved in nonsyndromic X-linked mental retardation. Multiple transcript variants encoding different isoforms have been found for this gene.

## Immunogen information

### Gene ID:

55634

### Uniprot

Q5JUW0

### Synonyms:

KRBOX4; ZNF673

## Antibody Information

### Recommended dilutions:

WB 1:500 - 1:2000 IHC 1:50  
- 1:200

### Source:

Rabbit

### Isotype:

IgG

### Purification:

Affinity purification

### Immunogen:

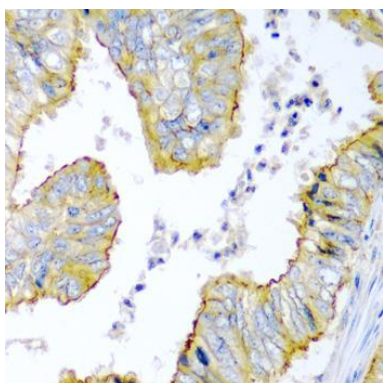
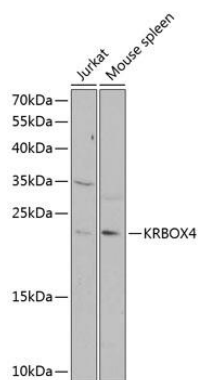
Recombinant fusion protein containing a sequence corresponding to amino acids 1-98 of human KRBOX4 (NP\_001123371.1).

### Storage:

Store at -20°C. Avoid freeze / thaw cycles. Buffer: PBS with 0.02% sodium azide, 50% glycerol, pH7.3.

## Product Images

---



Western blot analysis of extracts of various cell lines, using KRBOX4 antibody (CAB6471) at 1:1000 dilution. Secondary antibody: HRP Goat Anti-Rabbit IgG (H+L) (CABS014) at 1:10000 dilution. Lysates/proteins: 25ug per lane. Blocking buffer: 3% nonfat dry milk in TBST. Detection: ECL Enhanced Kit (CABM00021). Exposure time: 90s.

Immunohistochemistry of paraffin-embedded human colon carcinoma using KRBOX4 antibody (CAB6471) at dilution of 1:200 (40x lens).