

ACSS2 Rabbit Polyclonal Antibody



CAB6472

Product Information

Size:

20uL, 50uL, 100uL, 200uL

Observed MW:

78kDa

Calculated MW:

78kDa/80kDa

Applications:

WB IHC IF

Reactivity:

Human, Mouse, Rat

Protein Background

This gene encodes a cytosolic enzyme that catalyzes the activation of acetate for use in lipid synthesis and energy generation. The protein acts as a monomer and produces acetyl-CoA from acetate in a reaction that requires ATP. Expression of this gene is regulated by sterol regulatory element-binding proteins, transcription factors that activate genes required for the synthesis of cholesterol and unsaturated fatty acids. Alternative splicing results in multiple transcript variants.

Immunogen information

Gene ID:

55902

Uniprot

Q9NR19

Synonyms:

ACSS2; ACAS2; ACECS; ACS; ACSA; dJ1161H23.1

Antibody Information

Recommended dilutions:

WB 1:500 - 1:2000 IHC 1:50
- 1:200 IF 1:50 - 1:200

Source:

Rabbit

Isotype:

IgG

Purification:

Affinity purification

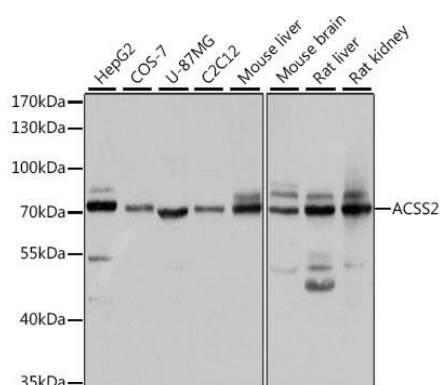
Immunogen:

Recombinant protein of human ACSS2

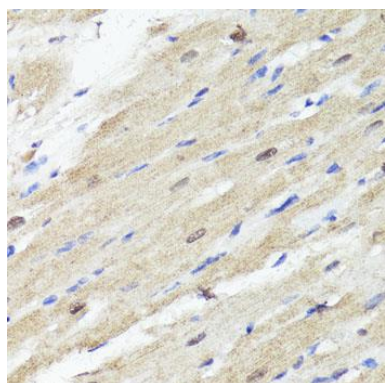
Storage:

Store at -20°C. Avoid freeze / thaw cycles. Buffer: PBS with 0.02% sodium azide, 50% glycerol, pH7.3.

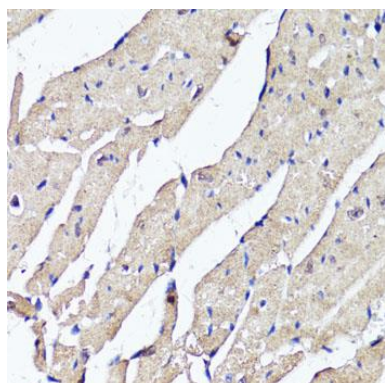
Product Images



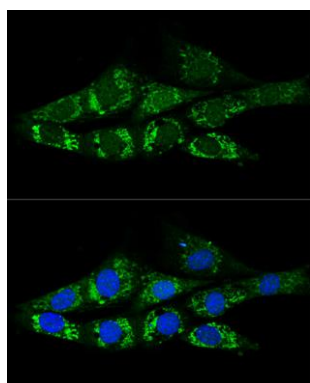
Western blot analysis of extracts of various cell lines, using ACSS2 antibody (CAB6472) at 1:1000 dilution. Secondary antibody: HRP Goat Anti-Rabbit IgG (H+L) (CABS014) at 1:10000 dilution. Lysates/proteins: 25ug per lane. Blocking buffer: 3% nonfat dry milk in TBST. Detection: ECL Basic Kit (CABM00020). Exposure time: 5s.



Immunohistochemistry of paraffin-embedded rat heart using ACSS2 antibody (CAB6472) at dilution of 1:100 (40x lens).



Immunohistochemistry of paraffin-embedded mouse heart using ACSS2 antibody (CAB6472) at dilution of 1:100 (40x lens).



Confocal immunofluorescence analysis of NIH-3T3 cells using ACSS2 Polyclonal Antibody (CAB6472) at dilution of 1:200. Blue: DAPI for nuclear staining.