

PHC3 Rabbit Polyclonal Antibody



CAB6479

Product Information

Size:

20uL, 50uL, 100uL, 200uL

Observed MW:

106kDa

Calculated MW:

14kDa/16kDa/19kDa/35kDa/
104kDa/106kDa/107kDa

Applications:

WB IF

Reactivity:

Human, Mouse, Rat

Antibody Information

Recommended dilutions:

WB 1:500 - 1:2000 IF 1:50 -
1:100

Source:

Rabbit

Isotype:

IgG

Purification:

Affinity purification

Protein Background

Immunogen information

Gene ID:

80012

Uniprot

Q8NDX5

Synonyms:

PHC3; EDR3; HPH3

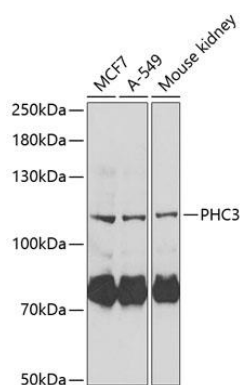
Immunogen:

Recombinant fusion protein containing a sequence corresponding to amino acids 100-300 of human PHC3 (NP_079223.3).

Storage:

Store at -20°C. Avoid freeze / thaw cycles. Buffer: PBS with 0.02% sodium azide, 50% glycerol, pH7.3.

Product Images



Western blot analysis of extracts of various cell lines, using PHC3 Antibody (CAB6479) at 1:1000 dilution. Secondary antibody: HRP Goat Anti-Rabbit IgG (H+L) (CABS014) at 1:10000 dilution. Lysates/proteins: 25ug per lane. Blocking buffer: 3% nonfat dry milk in TBST. Detection: ECL Enhanced Kit (CABM00021). Exposure time: 30s.