

RFFL Rabbit Polyclonal Antibody



CAB6489

Product Information

Size:

20uL, 50uL, 100uL, 200uL

Observed MW:

50kDa

Calculated MW:

36kDa/39kDa/40kDa

Applications:

WB

Reactivity:

Human, Mouse, Rat

Antibody Information

Recommended dilutions:

WB 1:500 - 1:2000

Source:

Rabbit

Isotype:

IgG

Purification:

Affinity purification

Protein Background

Immunogen information

Gene ID:

117584

Uniprot

Q8WZ73

Synonyms:

RFFL; CARP-2; CARP2; FRING; RIFIFYLIN; RNF189; RNF34L

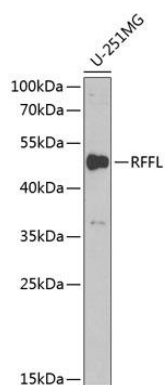
Immunogen:

Recombinant fusion protein containing a sequence corresponding to amino acids 1-190 of human RFFL (NP_001017368.1).

Storage:

Store at -20°C. Avoid freeze / thaw cycles. Buffer: PBS with 0.02% sodium azide, 50% glycerol, pH7.3.

Product Images



Western blot analysis of extracts of U-251MG cells, using RFFL antibody (CAB6489) at 1:1000 dilution. Secondary antibody: HRP Goat Anti-Rabbit IgG (H+L) (CABS014) at 1:10000 dilution. Lysates/proteins: 25ug per lane. Blocking buffer: 3% nonfat dry milk in TBST. Detection: ECL Basic Kit (CABM00020). Exposure time: 40s.