

# GRK1 Rabbit Polyclonal Antibody



CAB6497

## Product Information

### Size:

20uL100uL, 200uL

### Observed MW:

65kDa

### Calculated MW:

63kDa

### Applications:

WB IHC IF

### Reactivity:

Human, Mouse, Rat

## Protein Background

This gene encodes a member of the guanine nucleotide-binding protein (G protein)-coupled receptor kinase subfamily of the Ser/Thr protein kinase family. The protein phosphorylates rhodopsin and initiates its deactivation. Defects in GRK1 are known to cause Oguchi disease 2 (also known as stationary night blindness Oguchi type-2).

## Immunogen information

### Gene ID:

6011

### Uniprot

Q15835

### Synonyms:

GRK1; GPRK1; RHOK; RK

## Antibody Information

### Recommended dilutions:

WB 1:200 - 1:2000 IHC 1:50  
- 1:200 IF 1:50 - 1:200

### Source:

Rabbit

### Isotype:

IgG

### Purification:

Affinity purification

### Immunogen:

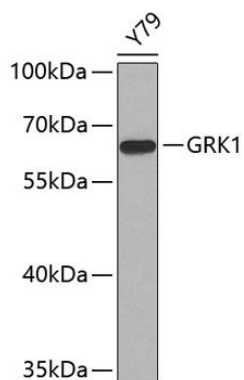
Recombinant fusion protein containing a sequence corresponding to amino acids 1-160 of human GRK1 (NP\_002920.1).

### Storage:

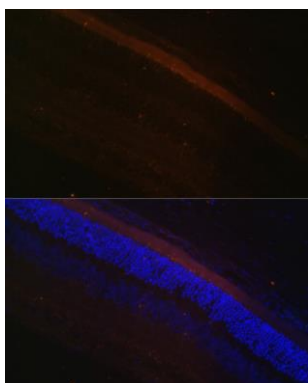
Store at -20°C. Avoid freeze / thaw cycles. Buffer: PBS with 0.02% sodium azide, 50% glycerol, pH7.3.

## Product Images

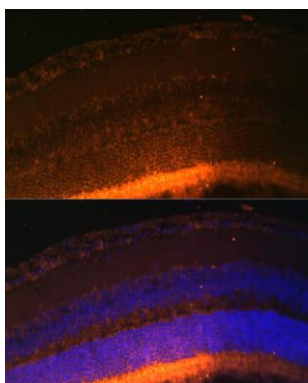
---



Western blot analysis of extracts of Y79 cells, using GRK1 antibody (CAB6497). Secondary antibody: HRP Goat Anti-Rabbit IgG (H+L) (CABS014) at 1:10000 dilution. Lysates/proteins: 25ug per lane. Blocking buffer: 3% nonfat dry milk in TBST.



Immunofluorescence analysis of rat retina using GRK1 Polyclonal Antibody (CAB6497) at dilution of 1:100 (40x lens). Blue: DAPI for nuclear staining.



Immunofluorescence analysis of mouse retina using GRK1 Polyclonal Antibody (CAB6497) at dilution of 1:100 (40x lens). Blue: DAPI for nuclear staining.