

# DDIT3 / CHOP Rabbit Polyclonal Antibody



CAB6504

## Product Information

### Size:

20uL, 50uL, 100uL, 200uL

### Observed MW:

30kDa

### Calculated MW:

19kDa/21kDa

### Applications:

WB IHC IF

### Reactivity:

Human, Mouse, Rat

## Antibody Information

### Recommended dilutions:

WB 1:500 - 1:2000 IF 1:50 -  
1:200 IHC 1:50 - 1:200

### Source:

Rabbit

### Isotype:

IgG

### Purification:

Affinity purification

## Protein Background

This gene encodes a member of the CCAAT/enhancer-binding protein (C/EBP) family of transcription factors. The protein functions as a dominant-negative inhibitor by forming heterodimers with other C/EBP members, such as C/EBP and LAP (liver activator protein), and preventing their DNA binding activity. The protein is implicated in adipogenesis and erythropoiesis, is activated by endoplasmic reticulum stress, and promotes apoptosis. Fusion of this gene and FUS on chromosome 16 or EWSR1 on chromosome 22 induced by translocation generates chimeric proteins in myxoid liposarcomas or Ewing sarcoma. Multiple alternatively spliced transcript variants encoding two isoforms with different length have been identified.

## Immunogen information

### Gene ID:

1649

### Uniprot

P35638

### Synonyms:

DDIT3; CEBPZ; CHOP; CHOP-10; CHOP10; GADD153; C/EBPzeta;  
DDIT3 / CHOP

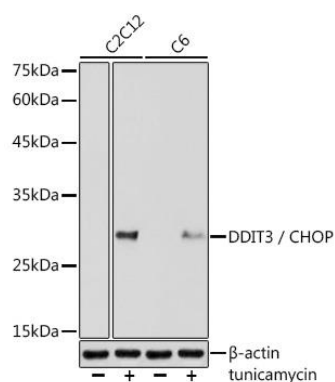
### Immunogen:

Recombinant protein of human DDIT3 / CHOP

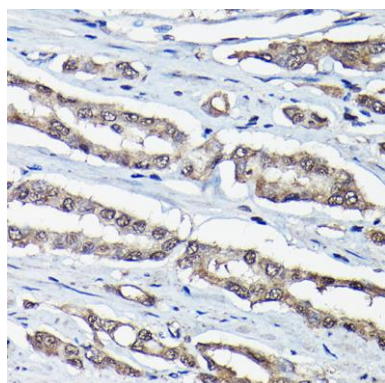
### Storage:

Store at -20°C. Avoid freeze / thaw cycles. Buffer: PBS with 0.02%  
sodium azide, 50% glycerol, pH7.3.

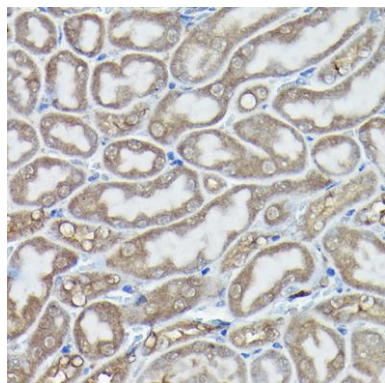
## Product Images



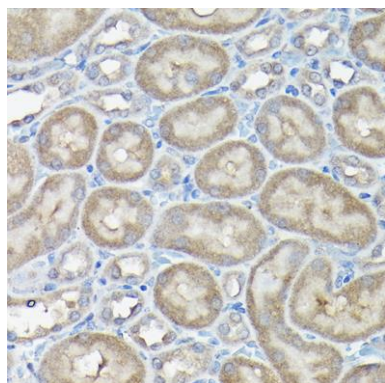
Western blot analysis of extracts of various cell lines, using DDIT3 / CHOP antibody (CAB6504) at 1:1000 dilution. Both C2C12 cells and C6 cells were treated by tunicamycin (2 ug/mL) for 8 hours. Secondary antibody: HRP Goat Anti-Rabbit IgG (H+L) (CABS014) at 1:10000 dilution. Lysates/proteins: 25ug per lane. Blocking buffer: 3% nonfat dry milk in TBST. Detection: ECL Basic Kit (CABM00020). Exposure time: 10s.



Immunohistochemistry of paraffin-embedded human prostate cancer using DDIT3 / CHOP Rabbit pAb (CAB6504) at dilution of 1:200 (40x lens).



Immunohistochemistry of paraffin-embedded mouse kidney using DDIT3 / CHOP Rabbit pAb (CAB6504) at dilution of 1:200 (40x lens).



Immunohistochemistry of paraffin-embedded rat kidney using DDIT3 / CHOP Rabbit pAb (CAB6504) at dilution of 1:200 (40x lens).