

# AGPAT1 Rabbit Polyclonal Antibody



CAB6517

## Product Information

### Size:

20uL, 50uL, 100uL, 200uL

### Observed MW:

32kDa

### Calculated MW:

31kDa

### Applications:

WB IP

### Reactivity:

Human, Mouse, Rat

## Protein Background

This gene encodes an enzyme that converts lysophosphatidic acid (LPA) into phosphatidic acid (PA). LPA and PA are two phospholipids involved in signal transduction and in lipid biosynthesis in cells. This enzyme localizes to the endoplasmic reticulum. This gene is located in the class III region of the human major histocompatibility complex. Alternative splicing results in two transcript variants encoding the same protein.

## Immunogen information

### Gene ID:

10554

### Uniprot

Q99943

### Synonyms:

AGPAT1; 1-AGPAT1; G15; LPAAT-alpha; LPAATA

## Antibody Information

### Recommended dilutions:

WB 1:500 - 1:2000 IP 1:50 - 1:100

### Source:

Rabbit

### Isotype:

IgG

### Purification:

Affinity purification

### Immunogen:

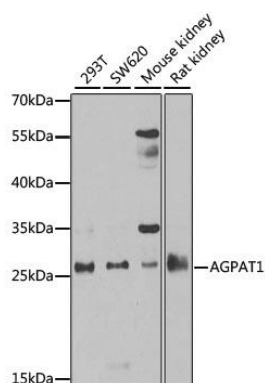
Recombinant fusion protein containing a sequence corresponding to amino acids 204-283 of human AGPAT1 (NP\_006402.1).

### Storage:

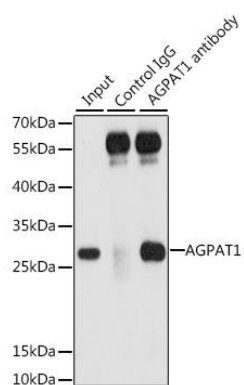
Store at -20°C. Avoid freeze / thaw cycles. Buffer: PBS with 0.02% sodium azide, 50% glycerol, pH7.3.

## Product Images

---



Western blot analysis of extracts of various cell lines, using AGPAT1 antibody (CAB6517) at 1:1000 dilution. Secondary antibody: HRP Goat Anti-Rabbit IgG (H+L) (CABS014) at 1:10000 dilution. Lysates/proteins: 25ug per lane. Blocking buffer: 3% nonfat dry milk in TBST. Detection: ECL Basic Kit (CABM00020). Exposure time: 90s.



Immunoprecipitation analysis of 200ug extracts of 293T cells, using 3 ug AGPAT1 antibody (CAB6517). Western blot was performed from the immunoprecipitate using AGPAT1 antibody (CAB6517) at a dilution of 1:1000.