

ALAS2 Rabbit Polyclonal Antibody



CAB6522

Product Information

Size:

20uL, 50uL, 100uL, 200uL

Observed MW:

60kDa

Calculated MW:

49kDa/60kDa/63kDa/64kDa

Applications:

WB IF

Reactivity:

Human, Mouse, Rat

Protein Background

The product of this gene specifies an erythroid-specific mitochondrially located enzyme. The encoded protein catalyzes the first step in the heme biosynthetic pathway. Defects in this gene cause X-linked pyridoxine-responsive sideroblastic anemia. Alternatively spliced transcript variants encoding different isoforms have been identified.

Immunogen information

Gene ID:

212

Uniprot

P22557

Synonyms:

ALAS2; ALAS-E; ALASE; ANH1; ASB; SIDBA1; XLDPP; XLEPP; XLSA

Antibody Information

Recommended dilutions:

WB 1:500 - 1:2000 IF 1:10 - 1:100

Source:

Rabbit

Isotype:

IgG

Purification:

Affinity purification

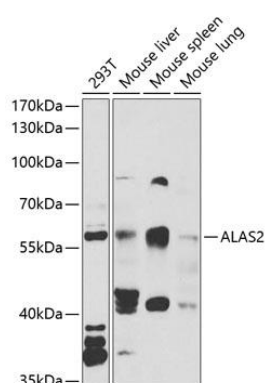
Immunogen:

Recombinant fusion protein containing a sequence corresponding to amino acids 50-320 of human ALAS2 (NP_001033057.1).

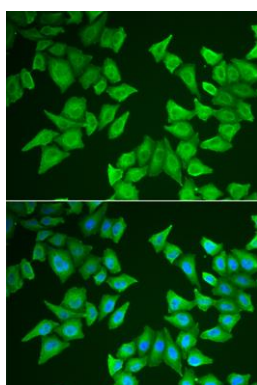
Storage:

Store at -20°C. Avoid freeze / thaw cycles. Buffer: PBS with 0.02% sodium azide, 50% glycerol, pH7.3.

Product Images



Western blot analysis of extracts of various cell lines, using ALAS2 antibody (CAB6522) at 1:1000 dilution. Secondary antibody: HRP Goat Anti-Rabbit IgG (H+L) (CABS014) at 1:10000 dilution. Lysates/proteins: 25ug per lane. Blocking buffer: 3% nonfat dry milk in TBST. Detection: ECL Basic Kit (CABM00020). Exposure time: 90s.



Immunofluorescence analysis of HeLa cells using ALAS2 antibody (CAB6522). Blue: DAPI for nuclear staining.