

ASF1A Rabbit Polyclonal Antibody



CAB6528

Product Information

Size:

20uL, 50uL, 100uL, 200uL

Observed MW:

23kDa

Calculated MW:

22kDa

Applications:

WB IF

Reactivity:

Human, Mouse

Protein Background

This gene encodes a member of the H3/H4 family of histone chaperone proteins and is similar to the anti-silencing function-1 gene in yeast. The protein is a key component of a histone donor complex that functions in nucleosome assembly. It interacts with histones H3 and H4, and functions together with a chromatin assembly factor during DNA replication and repair.

Immunogen information

Gene ID:

25842

Uniprot

Q9Y294

Synonyms:

ASF1A; CGI-98; CIA; HSPC146

Antibody Information

Recommended dilutions:

WB 1:500 - 1:2000 IF 1:50 - 1:100

Source:

Rabbit

Isotype:

IgG

Purification:

Affinity purification

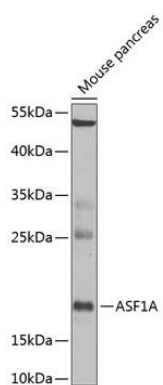
Immunogen:

Recombinant fusion protein containing a sequence corresponding to amino acids 1-204 of human ASF1A (NP_054753.1).

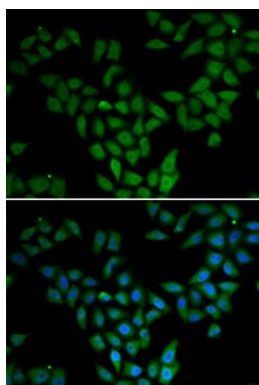
Storage:

Store at -20°C. Avoid freeze / thaw cycles. Buffer: PBS with 0.02% sodium azide, 50% glycerol, pH7.3.

Product Images



Western blot analysis of extracts of mouse pancreas, using ASF1A Antibody (CAB6528) at 1:1000 dilution. Secondary antibody: HRP Goat Anti-Rabbit IgG (H+L) (CABS014) at 1:10000 dilution. Lysates/proteins: 25ug per lane. Blocking buffer: 3% nonfat dry milk in TBST. Detection: ECL Enhanced Kit (CABM00021). Exposure time: 20s.



Immunofluorescence analysis of HeLa cells using ASF1A antibody (CAB6528). Blue: DAPI for nuclear staining.