

ATOH1 Rabbit Polyclonal Antibody



CAB6530

Product Information

Size:

20uL, 50uL, 100uL, 200uL

Observed MW:

35kDa

Calculated MW:

38kDa

Applications:

WB IF

Reactivity:

Human, Mouse

Antibody Information

Recommended dilutions:

WB 1:500 - 1:2000 IF 1:50 - 1:200

Source:

Rabbit

Isotype:

IgG

Purification:

Affinity purification

Protein Background

This protein belongs to the basic helix-loop-helix (BHLH) family of transcription factors. It activates E-box dependent transcription along with E47.

Immunogen information

Gene ID:

474

Uniprot

Q92858

Synonyms:

ATOH1; ATH1; HATH1; MATH-1; bHLHa14

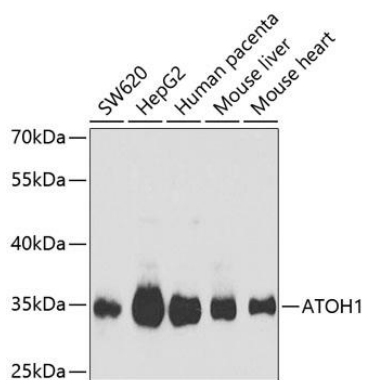
Immunogen:

Recombinant fusion protein containing a sequence corresponding to amino acids 215-354 of human ATOH1 (NP_005163.1).

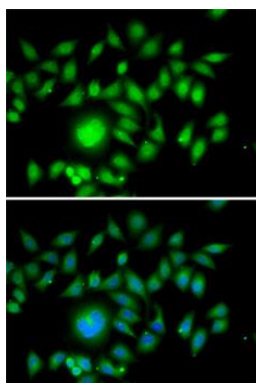
Storage:

Store at -20°C. Avoid freeze / thaw cycles. Buffer: PBS with 0.02% sodium azide, 50% glycerol, pH7.3.

Product Images



Western blot analysis of extracts of various cell lines, using ATOH1 Antibody (CAB6530) at 1:1000 dilution. Secondary antibody: HRP Goat Anti-Rabbit IgG (H+L) (CABS014) at 1:10000 dilution. Lysates/proteins: 25ug per lane. Blocking buffer: 3% nonfat dry milk in TBST. Detection: ECL Basic Kit (CABM00020). Exposure time: 1s.



Immunofluorescence analysis of MCF7 cells using ATOH1 antibody (CAB6530). Blue: DAPI for nuclear staining.