

BAP1 Rabbit Polyclonal Antibody



CAB6533

Product Information

Size:

20uL, 50uL, 100uL, 200uL

Observed MW:

80kDa

Calculated MW:

80kDa

Applications:

WB IHC IF

Reactivity:

Human, Mouse, Rat

Antibody Information

Recommended dilutions:

WB 1:500 - 1:2000 IHC 1:50
- 1:200 IF 1:50 - 1:200

Source:

Rabbit

Isotype:

IgG

Purification:

Affinity purification

Protein Background

This gene belongs to the ubiquitin C-terminal hydrolase subfamily of deubiquitinating enzymes that are involved in the removal of ubiquitin from proteins. The encoded enzyme binds to the breast cancer type 1 susceptibility protein (BRCA1) via the RING finger domain of the latter and acts as a tumor suppressor. In addition, the enzyme may be involved in regulation of transcription, regulation of cell cycle and growth, response to DNA damage and chromatin dynamics. Germline mutations in this gene may be associated with tumor predisposition syndrome (TPDS), which involves increased risk of cancers including malignant mesothelioma, uveal melanoma and cutaneous melanoma.

Immunogen information

Gene ID:

8314

Uniprot

Q92560

Synonyms:

BAP1; HUCEP-13; UCHL2; hucep-6

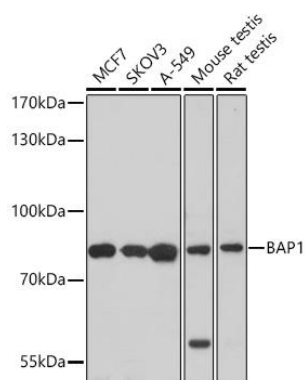
Immunogen:

Recombinant fusion protein containing a sequence corresponding to amino acids 460-729 of human BAP1 (NP_004647.1).

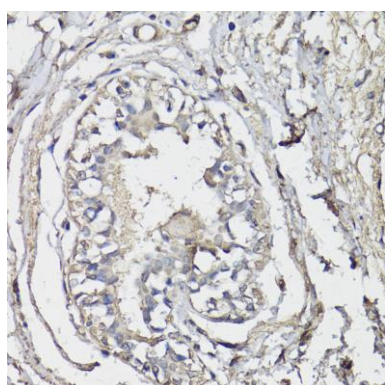
Storage:

Store at -20°C. Avoid freeze / thaw cycles. Buffer: PBS with 0.02% sodium azide, 50% glycerol, pH7.3.

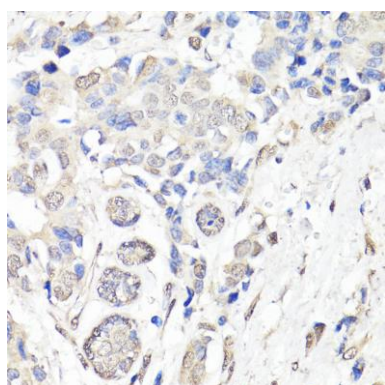
Product Images



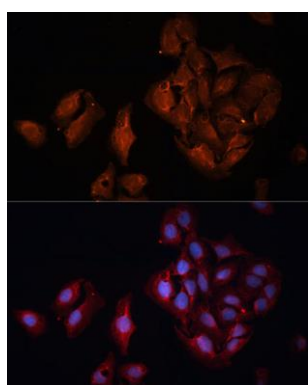
Western blot analysis of extracts of various cell lines, using BAP1 antibody (A6533) at 1:1000 dilution. Secondary antibody: HRP Goat Anti-Rabbit IgG (H+L) (CABS014) at 1:10000 dilution. Lysates/proteins: 25ug per lane. Blocking buffer: 3% nonfat dry milk in TBST. Detection: ECL Basic Kit (CABM00020). Exposure time: 60s.



Immunohistochemistry of paraffin-embedded human breast using BAP1 antibody (CAB6533) at dilution of 1:150 (40x lens).



Immunohistochemistry of paraffin-embedded human breast cancer using BAP1 antibody (CAB6533) at dilution of 1:150 (40x lens).



Immunofluorescence analysis of U-2 OS cells using BAP1 Polyclonal Antibody (CAB6533) at dilution of 1:100 (40x lens). Blue: DAPI for nuclear staining.