

# BHLHE40 Rabbit Polyclonal Antibody



CAB6534

## Product Information

### Size:

20uL, 50uL, 100uL, 200uL

### Observed MW:

48kDa

### Calculated MW:

45kDa

### Applications:

WB IHC IF

### Reactivity:

Human, Mouse, Rat

## Protein Background

This gene encodes a basic helix-loop-helix protein expressed in various tissues. The encoded protein can interact with ARNTL or compete for E-box binding sites in the promoter of PER1 and repress CLOCK/ARNTL's transactivation of PER1. This gene is believed to be involved in the control of circadian rhythm and cell differentiation.

## Immunogen information

### Gene ID:

8553

### Uniprot

O14503

### Synonyms:

BHLHE40; BHLHB2; Clast5; DEC1; HLHB2; SHARP-2; SHARP2; STRA13; Stra14

## Antibody Information

### Recommended dilutions:

WB 1:500 - 1:2000 IHC 1:50  
- 1:200 IF 1:50 - 1:200

### Source:

Rabbit

### Isotype:

IgG

### Purification:

Affinity purification

### Immunogen:

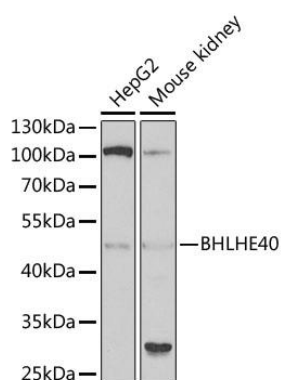
Recombinant fusion protein containing a sequence corresponding to amino acids 173-412 of human BHLHE40 (NP\_003661.1).

### Storage:

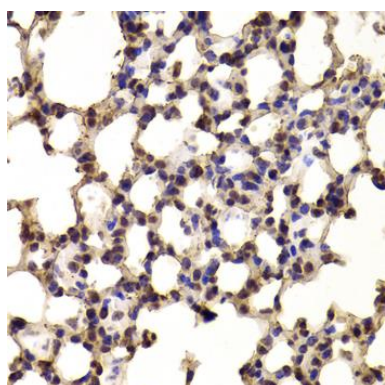
Store at -20°C. Avoid freeze / thaw cycles. Buffer: PBS with 0.02% sodium azide, 50% glycerol, pH7.3.

## Product Images

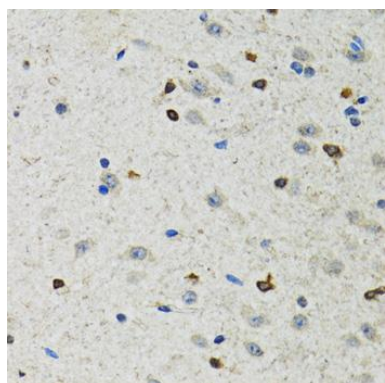
---



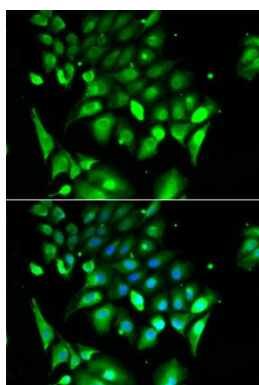
Western blot analysis of extracts of various cell lines, using BHLHE40 antibody (CAB6534) at 1:1000 dilution. Secondary antibody: HRP Goat Anti-Rabbit IgG (H+L) (CABS014) at 1:10000 dilution. Lysates/proteins: 25ug per lane. Blocking buffer: 3% nonfat dry milk in TBST. Detection: ECL Basic Kit (CABM00020). Exposure time: 90s.



Immunohistochemistry of paraffin-embedded mouse lung using BHLHE40 antibody (CAB6534) at dilution of 1:100 (40x lens).



Immunohistochemistry of paraffin-embedded rat brain using BHLHE40 antibody (CAB6534) at dilution of 1:100 (40x lens).



Immunofluorescence analysis of HeLa cells using BHLHE40 antibody (CAB6534). Blue: DAPI for nuclear staining.