

CALU Rabbit Polyclonal Antibody



CAB6538

Product Information

Size:

20uL, 50uL, 100uL, 200uL

Observed MW:

50kDa

Calculated MW:

8kDa/16-38kDa

Applications:

WB IHC IF

Reactivity:

Human, Mouse, Rat

Protein Background

The product of this gene is a calcium-binding protein localized in the endoplasmic reticulum (ER) and it is involved in such ER functions as protein folding and sorting. This protein belongs to a family of multiple EF-hand proteins (CERC) that include reticulocalbin, ERC-55, and Cab45 and the product of this gene. Alternatively spliced transcript variants encoding different isoforms have been identified.

Immunogen information

Gene ID:

813

Uniprot

O43852

Synonyms:

CALU; calumenin

Antibody Information

Recommended dilutions:

WB 1:500 - 1:2000 IHC 1:50
- 1:100 IF 1:50 - 1:200

Source:

Rabbit

Isotype:

IgG

Purification:

Affinity purification

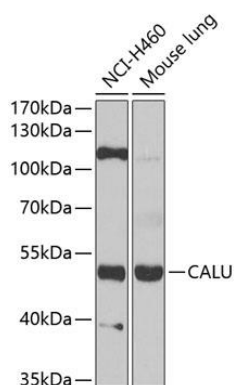
Immunogen:

Recombinant fusion protein containing a sequence corresponding to amino acids 20-315 of human CALU (NP_001210.1).

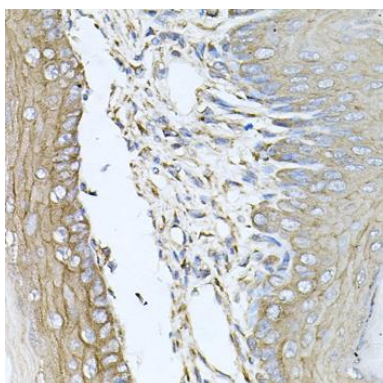
Storage:

Store at -20°C. Avoid freeze / thaw cycles. Buffer: PBS with 0.02% sodium azide, 50% glycerol, pH7.3.

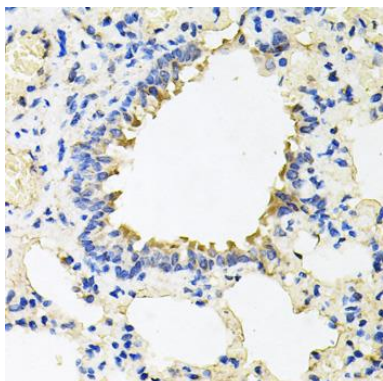
Product Images



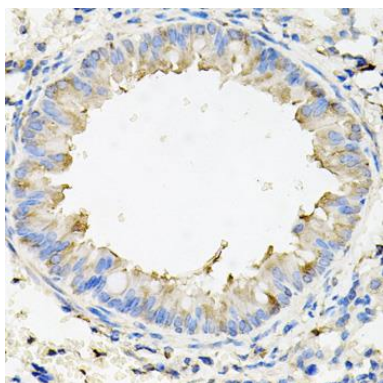
Western blot analysis of extracts of various cell lines, using CALU antibody (CAB6538) at 1:1000 dilution. Secondary antibody: HRP Goat Anti-Rabbit IgG (H+L) (CABS014) at 1:10000 dilution. Lysates/proteins: 25ug per lane. Blocking buffer: 3% nonfat dry milk in TBST. Detection: ECL Basic Kit (CABM00020). Exposure time: 90s.



Immunohistochemistry of paraffin-embedded mouse skin using CALU antibody (CAB6538) at dilution of 1:100 (40x lens).



Immunohistochemistry of paraffin-embedded rat lung using CALU antibody (CAB6538) at dilution of 1:100 (40x lens).



Immunohistochemistry of paraffin-embedded mouse lung using CALU antibody (CAB6538) at dilution of 1:100 (40x lens).