

CCBL1 Rabbit Polyclonal Antibody



CAB6542

Product Information

Size:

20uL, 50uL, 100uL, 200uL

Observed MW:

48kDa

Calculated MW:

27kDa/42kDa/47kDa

Applications:

WB IHC IF

Reactivity:

Human, Mouse, Rat

Antibody Information

Recommended dilutions:

WB 1:500 - 1:2000 IHC 1:50
- 1:200 IF 1:10 - 1:100

Source:

Rabbit

Isotype:

IgG

Purification:

Affinity purification

Protein Background

This gene encodes a cytosolic enzyme that is responsible for the metabolism of cysteine conjugates of certain halogenated alkenes and alkanes. This metabolism can form reactive metabolites leading to nephrotoxicity and neurotoxicity. Increased levels of this enzyme have been linked to schizophrenia. Multiple transcript variants that encode different isoforms have been identified for this gene.

Immunogen information

Gene ID:

883

Uniprot

Q16773

Synonyms:

KYAT1; CCBL1; GTK; KAT1; KATI

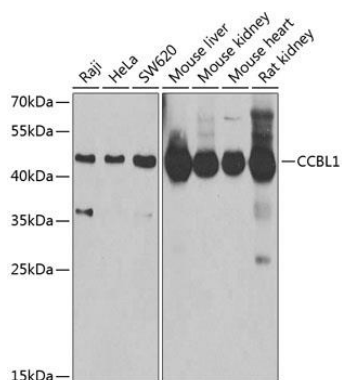
Immunogen:

Recombinant fusion protein containing a sequence corresponding to amino acids 1-270 of human CCBL1 (NP_001116144.1).

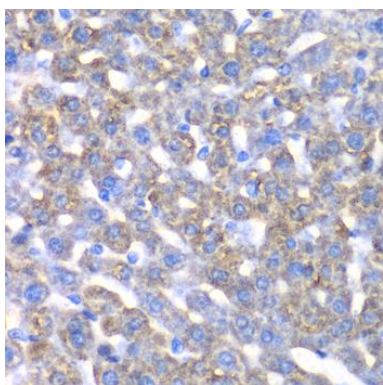
Storage:

Store at -20°C. Avoid freeze / thaw cycles. Buffer: PBS with 0.02% sodium azide, 50% glycerol, pH7.3.

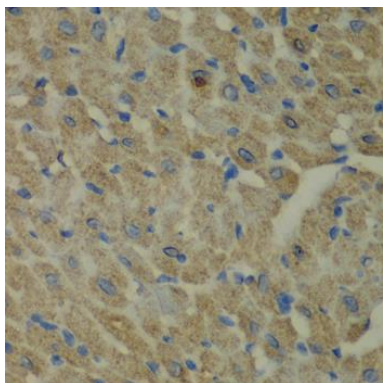
Product Images



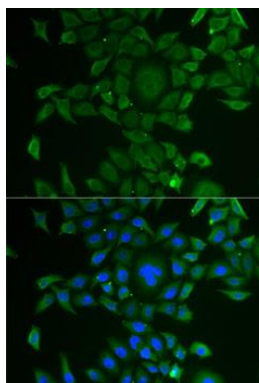
Western blot analysis of extracts of various cell lines, using CCBL1 Antibody (CAB6542) at 1:1000 dilution. Secondary antibody: HRP Goat Anti-Rabbit IgG (H+L) (CABS014) at 1:10000 dilution. Lysates/proteins: 25ug per lane. Blocking buffer: 3% nonfat dry milk in TBST. Detection: ECL Basic Kit (CABM00020). Exposure time: 90s.



Immunohistochemistry of paraffin-embedded mouse liver using CCBL1 antibody (CAB6542) at dilution of 1:100 (40x lens).



Immunohistochemistry of paraffin-embedded mouse heart using CCBL1 antibody (CAB6542) at dilution of 1:100 (40x lens).



Immunofluorescence analysis of U2OS cells using CCBL1 antibody (CAB6542). Blue: DAPI for nuclear staining.