

CCM2 Rabbit Polyclonal Antibody



CAB6544

Product Information

Size:

20uL, 50uL, 100uL, 200uL

Observed MW:

55kDa

Calculated MW:

39kDa/42kDa/48kDa/51kDa

Applications:

WB IHC

Reactivity:

Human, Mouse, Rat

Antibody Information

Recommended dilutions:

WB 1:500 - 1:2000 IHC 1:50
- 1:200

Source:

Rabbit

Isotype:

IgG

Purification:

Affinity purification

Protein Background

This gene encodes a scaffold protein that functions in the stress-activated p38 Mitogen-activated protein kinase (MAPK) signaling cascade. The protein interacts with SMAD specific E3 ubiquitin protein ligase 1 (also known as SMURF1) via a phosphotyrosine binding domain to promote RhoA degradation. The protein is required for normal cytoskeletal structure, cell-cell interactions, and lumen formation in endothelial cells. Mutations in this gene result in cerebral cavernous malformations. Multiple transcript variants encoding different isoforms have been found for this gene.

Immunogen information

Gene ID:

83605

Uniprot

Q9BSQ5

Synonyms:

CCM2; C7orf22; OSM; PP10187

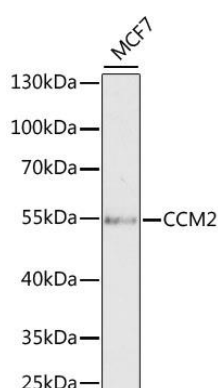
Immunogen:

Recombinant fusion protein containing a sequence corresponding to amino acids 1-300 of human CCM2 (NP_113631.1).

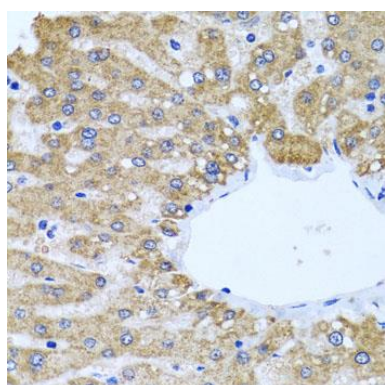
Storage:

Store at -20°C. Avoid freeze / thaw cycles. Buffer: PBS with 0.02% sodium azide, 50% glycerol, pH7.3.

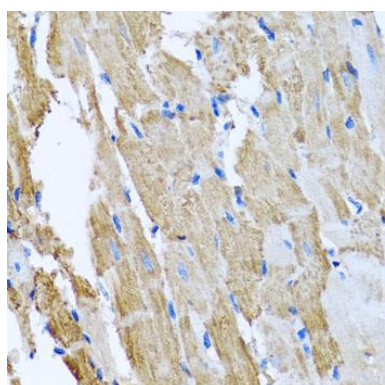
Product Images



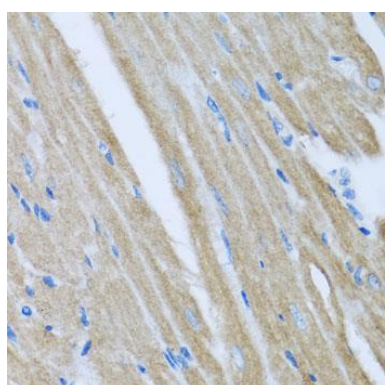
Western blot analysis of extracts of MCF7 cells, using CCM2 antibody (CAB6544) at 1:1000 dilution. Secondary antibody: HRP Goat Anti-Rabbit IgG (H+L) (CABS014) at 1:10000 dilution. Lysates/proteins: 25ug per lane. Blocking buffer: 3% nonfat dry milk in TBST. Detection: ECL Basic Kit (CABM00020). Exposure time: 90s.



Immunohistochemistry of paraffin-embedded human liver using CCM2 antibody (CAB6544) at dilution of 1:100 (40x lens).



Immunohistochemistry of paraffin-embedded rat heart using CCM2 antibody (CAB6544) at dilution of 1:100 (40x lens).



Immunohistochemistry of paraffin-embedded mouse heart using CCM2 antibody (CAB6544) at dilution of 1:100 (40x lens).