

CENPC Rabbit Polyclonal Antibody



CAB6557

Product Information

Size:

20uL, 50uL, 100uL, 200uL

Observed MW:

130kDa

Calculated MW:

61kDa/106kDa

Applications:

WB IHC

Reactivity:

Human, Mouse, Rat

Protein Background

Centromere protein C 1 is a centromere autoantigen and a component of the inner kinetochore plate. The protein is required for maintaining proper kinetochore size and a timely transition to anaphase. A putative pseudogene exists on chromosome 12.

Immunogen information

Gene ID:

1060

Uniprot

Q03188

Synonyms:

CENPC; CENP-C; CENPC1; MIF2; hcp-4

Antibody Information

Recommended dilutions:

WB 1:500 - 1:2000 IHC 1:50
- 1:200

Source:

Rabbit

Isotype:

IgG

Purification:

Affinity purification

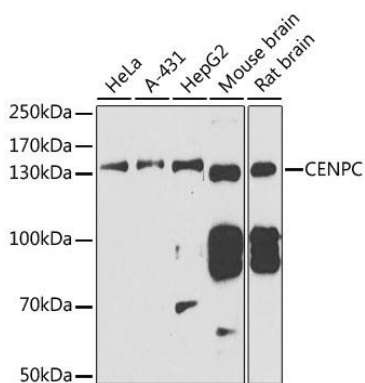
Immunogen:

Recombinant fusion protein containing a sequence corresponding to amino acids 1-300 of human CENPC (NP_001803.2).

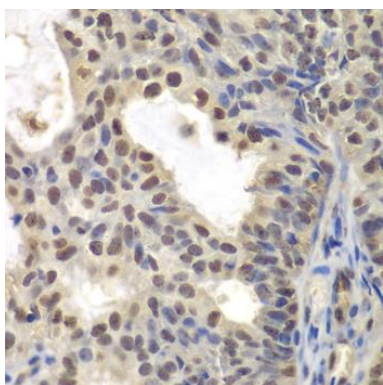
Storage:

Store at -20°C. Avoid freeze / thaw cycles. Buffer: PBS with 0.02% sodium azide, 50% glycerol, pH7.3.

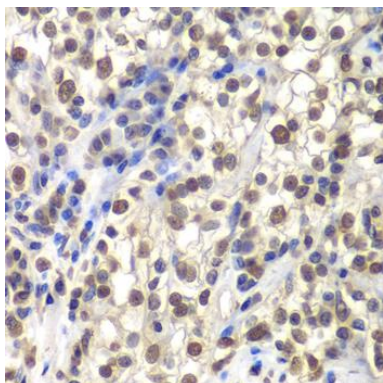
Product Images



Western blot analysis of extracts of various cell lines, using CENPC antibody (CAB6557) at 1:1000 dilution. Secondary antibody: HRP Goat Anti-Rabbit IgG (H+L) (CABS014) at 1:10000 dilution. Lysates/proteins: 25ug per lane. Blocking buffer: 3% nonfat dry milk in TBST. Detection: ECL Basic Kit (CABM00020). Exposure time: 90s.



Immunohistochemistry of paraffin-embedded human oophoroma using CENPC antibody (CAB6557) at dilution of 1:200 (40x lens).



Immunohistochemistry of paraffin-embedded human kidney cancer using CENPC antibody (CAB6557) at dilution of 1:200 (40x lens).