

CPM Rabbit Polyclonal Antibody



CAB6565

Product Information

Size:

20uL, 50uL, 100uL, 200uL

Observed MW:

62kDa

Calculated MW:

50kDa

Applications:

WB IHC

Reactivity:

Human

Protein Background

The protein encoded by this gene is a membrane-bound arginine/lysine carboxypeptidase. Its expression is associated with monocyte to macrophage differentiation. This encoded protein contains hydrophobic regions at the amino and carboxy termini and has 6 potential asparagine-linked glycosylation sites. The active site residues of carboxypeptidases A and B are conserved in this protein. Three alternatively spliced transcript variants encoding the same protein have been described for this gene.

Immunogen information

Gene ID:

1368

Uniprot

P14384

Synonyms:

CPM

Antibody Information

Recommended dilutions:

WB 1:500 - 1:2000 IHC 1:50
- 1:100

Source:

Rabbit

Isotype:

IgG

Purification:

Affinity purification

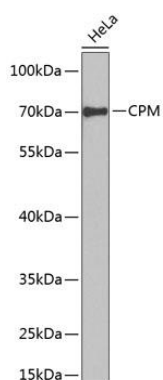
Immunogen:

Recombinant fusion protein containing a sequence corresponding to amino acids 204-443 of human CPM (NP_001005502.1).

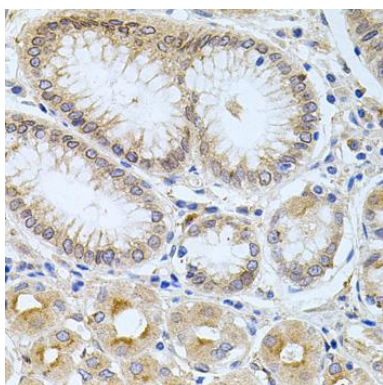
Storage:

Store at -20°C. Avoid freeze / thaw cycles. Buffer: PBS with 0.02% sodium azide, 50% glycerol, pH7.3.

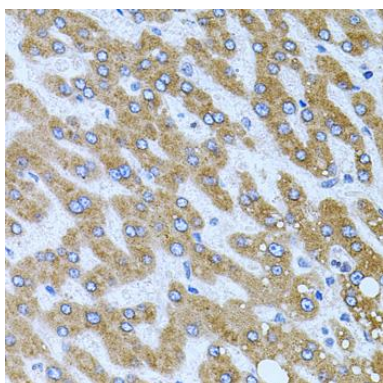
Product Images



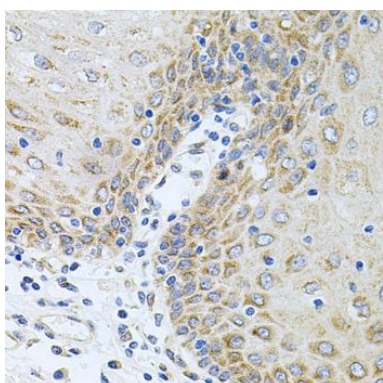
Western blot analysis of extracts of HeLa cells, using CPM Antibody (CAB6565) at 1:1000 dilution. Secondary antibody: HRP Goat Anti-Rabbit IgG (H+L) (CABS014) at 1:10000 dilution. Lysates/proteins: 25ug per lane. Blocking buffer: 3% nonfat dry milk in TBST. Detection: ECL Basic Kit (CABM00020). Exposure time: 15s.



Immunohistochemistry of paraffin-embedded human stomach using CPM antibody (CAB6565) at dilution of 1:100 (40x lens).



Immunohistochemistry of paraffin-embedded human liver tissue using CPM antibody (CAB6565) at dilution of 1:100 (40x lens).



Immunohistochemistry of paraffin-embedded human esophagus using CPM antibody (CAB6565) at dilution of 1:100 (40x lens).