

CRHBP Rabbit Polyclonal Antibody



CAB6568

Product Information

Size:

20uL, 50uL, 100uL, 200uL

Observed MW:

36kDa

Calculated MW:

36kDa

Applications:

WB IHC IF

Reactivity:

Human, Mouse, Rat

Protein Background

Corticotropin-releasing hormone is a potent stimulator of synthesis and secretion of preopiomelanocortin-derived peptides. Although CRH concentrations in the human peripheral circulation are normally low, they increase throughout pregnancy and fall rapidly after parturition. Maternal plasma CRH probably originates from the placenta. Human plasma contains a CRH-binding protein which inactivates CRH and which may prevent inappropriate pituitary-adrenal stimulation in pregnancy.

Immunogen information

Gene ID:

1393

Uniprot

P24387

Synonyms:

CRHBP; CRF-BP; CRFBP

Antibody Information

Recommended dilutions:

WB 1:500 - 1:2000 IHC 1:50
- 1:100 IF 1:50 - 1:100

Source:

Rabbit

Isotype:

IgG

Purification:

Affinity purification

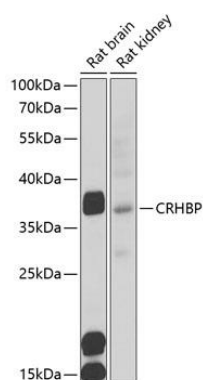
Immunogen:

Recombinant fusion protein containing a sequence corresponding to amino acids 25-322 of human CRHBP (NP_001873.2).

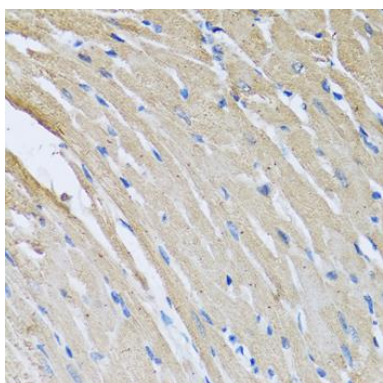
Storage:

Store at -20°C. Avoid freeze / thaw cycles. Buffer: PBS with 0.02% sodium azide, 50% glycerol, pH7.3.

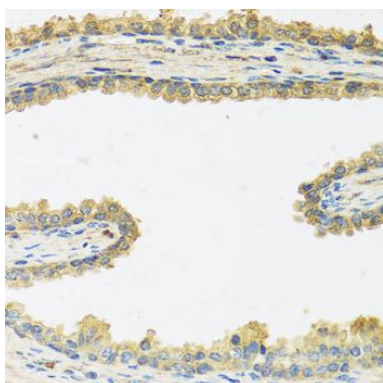
Product Images



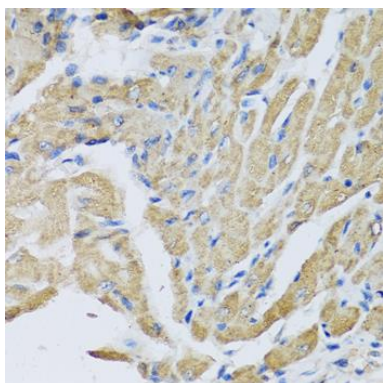
Western blot analysis of extracts of various cell lines, using CRHBP antibody (CAB6568) at 1:1000 dilution. Secondary antibody: HRP Goat Anti-Rabbit IgG (H+L) (CABS014) at 1:10000 dilution. Lysates/proteins: 25ug per lane. Blocking buffer: 3% nonfat dry milk in TBST. Detection: ECL Basic Kit (CABM00020). Exposure time: 90s.



Immunohistochemistry of paraffin-embedded rat heart using CRHBP antibody (CAB6568) at dilution of 1:100 (40x lens).



Immunohistochemistry of paraffin-embedded human prostate using CRHBP antibody (CAB6568) at dilution of 1:100 (40x lens).



Immunohistochemistry of paraffin-embedded mouse heart using CRHBP antibody (CAB6568) at dilution of 1:100 (40x lens).