

DDX1 Rabbit Polyclonal Antibody



CAB6575

Product Information

Size:

20uL, 50uL, 100uL, 200uL

Observed MW:

100kDa

Calculated MW:

68kDa/69kDa/82kDa

Applications:

WB IHC IF IP

Reactivity:

Human, Mouse, Rat

Antibody Information

Recommended dilutions:

WB 1:500 - 1:2000 IHC 1:50
- 1:200 IF 1:10 - 1:100 IP
1:20 - 1:50

Source:

Rabbit

Isotype:

IgG

Purification:

Affinity purification

Protein Background

DEAD box proteins, characterized by the conserved motif Asp-Glu-Ala-Asp (DEAD), are putative RNA helicases. They are implicated in a number of cellular processes involving alteration of RNA secondary structure such as translation initiation, nuclear and mitochondrial splicing, and ribosome and spliceosome assembly. Based on their distribution patterns, some members of this family are believed to be involved in embryogenesis, spermatogenesis, and cellular growth and division. This gene encodes a DEAD box protein of unknown function. It shows high transcription levels in 2 retinoblastoma cell lines and in tissues of neuroectodermal origin.

Immunogen information

Gene ID:

1653

Uniprot

Q92499

Synonyms:

DDX1; DBP-RB; UKVH5d

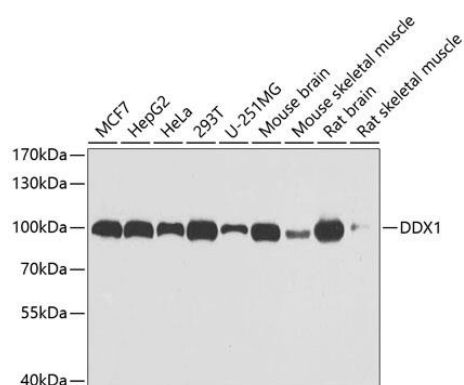
Immunogen:

Recombinant fusion protein containing a sequence corresponding to amino acids 441-740 of human DDX1 (NP_004930.1).

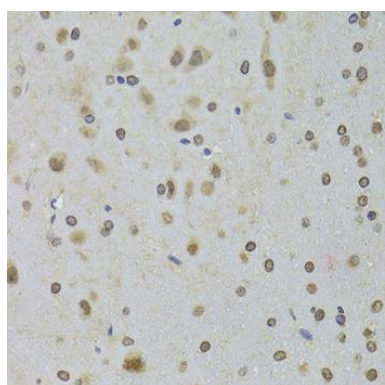
Storage:

Store at -20°C. Avoid freeze / thaw cycles. Buffer: PBS with 0.02% sodium azide, 50% glycerol, pH7.3.

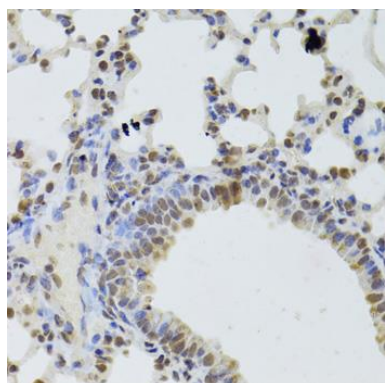
Product Images



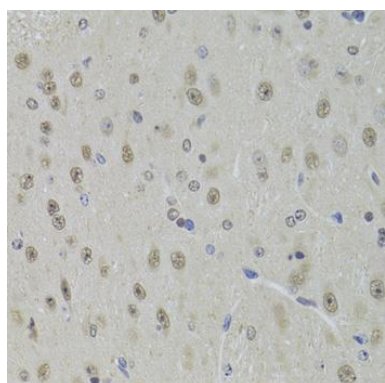
Western blot analysis of extracts of various cell lines, using DDX1 antibody (CAB6575) at 1:1000 dilution. Secondary antibody: HRP Goat Anti-Rabbit IgG (H+L) (CABS014) at 1:10000 dilution. Lysates/proteins: 25ug per lane. Blocking buffer: 3% nonfat dry milk in TBST. Detection: ECL Basic Kit (CABM00020). Exposure time: 10s.



Immunohistochemistry of paraffin-embedded rat brain using DDX1 Antibody (CAB6575) at dilution of 1:100 (40x lens).



Immunohistochemistry of paraffin-embedded mouse lung using DDX1 Antibody (CAB6575) at dilution of 1:100 (40x lens).



Immunohistochemistry of paraffin-embedded mouse brain using DDX1 Antibody (CAB6575) at dilution of 1:100 (40x lens).