

DDX41 Rabbit Polyclonal Antibody



CAB6576

Product Information

Size:

20uL, 50uL, 100uL, 200uL

Observed MW:

75kDa

Calculated MW:

69kDa

Applications:

WB IHC IF IP

Reactivity:

Human, Mouse, Rat

Antibody Information

Recommended dilutions:

WB 1:500 - 1:2000 IHC 1:50
- 1:200 IF 1:50 - 1:100 IP
1:50 - 1:200

Source:

Rabbit

Isotype:

IgG

Purification:

Affinity purification

Protein Background

DEAD box proteins, characterized by the conserved motif Asp-Glu-Ala-Asp (DEAD), are putative RNA helicases. They are implicated in a number of cellular processes involving alteration of RNA secondary structure, such as translation initiation, nuclear and mitochondrial splicing, and ribosome and spliceosome assembly. Based on their distribution patterns, some members of the DEAD box protein family are believed to be involved in embryogenesis, spermatogenesis, and cellular growth and division. The protein encoded by this gene is a member of the DEAD box protein family and interacts with several spliceosomal proteins. In addition, the encoded protein may recognize the bacterial second messengers cyclic di-GMP and cyclic di-AMP, resulting in the induction of genes involved in the innate immune response.

Immunogen information

Gene ID:

51428

Uniprot

Q9UJV9

Synonyms:

DDX41; ABS; MPLPF

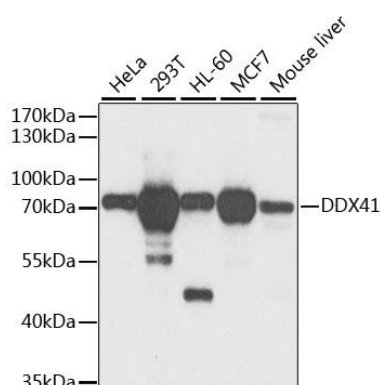
Immunogen:

Recombinant fusion protein containing a sequence corresponding to amino acids 1-300 of human DDX41 (NP_057306.2).

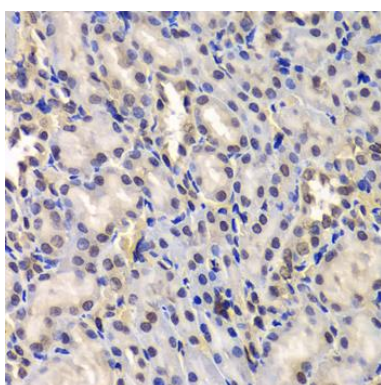
Storage:

Store at -20°C. Avoid freeze / thaw cycles. Buffer: PBS with 0.02% sodium azide, 50% glycerol, pH7.3.

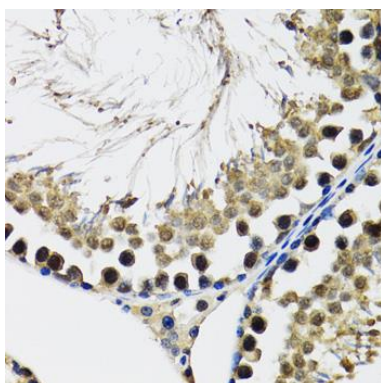
Product Images



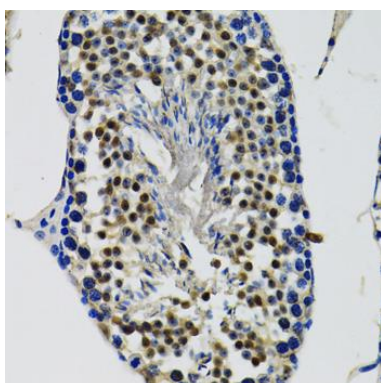
Western blot analysis of extracts of various cell lines, using DDX41 antibody (CAB6576) at 1:1000 dilution. Secondary antibody: HRP Goat Anti-Rabbit IgG (H+L) (CABS014) at 1:10000 dilution. Lysates/proteins: 25ug per lane. Blocking buffer: 3% nonfat dry milk in TBST. Detection: ECL Basic Kit (CABM00020). Exposure time: 30s.



Immunohistochemistry of paraffin-embedded rat kidney using DDX41 antibody (CAB6576) at dilution of 1:100 (40x lens).



Immunohistochemistry of paraffin-embedded rat testis using DDX41 antibody (CAB6576) at dilution of 1:100 (40x lens).



Immunohistochemistry of paraffin-embedded mouse testis using DDX41 antibody (CAB6576) at dilution of 1:100 (40x lens).