

DHDH Rabbit Polyclonal Antibody



CAB6577

Product Information

Size:

20uL, 50uL, 100uL, 200uL

Observed MW:

36kDa

Calculated MW:

36kDa

Applications:

WB

Reactivity:

Mouse

Protein Background

This gene encodes an enzyme that belongs to the family of dihydrodiol dehydrogenases, which exist in multiple forms in mammalian tissues and are involved in the metabolism of xenobiotics and sugars. These enzymes catalyze the NADP1-linked oxidation of transdihydrodiols of aromatic hydrocarbons to corresponding catechols. This enzyme is a dimeric dihydrodiol dehydrogenase, and it differs from monomeric dihydrodiol dehydrogenases in its high substrate specificity for trans-dihydrodiols of aromatic hydrocarbons in the oxidative direction.

Immunogen information

Gene ID:

27294

Uniprot

Q9UQ10

Synonyms:

DHDH; 2DD; HUM2DD

Antibody Information

Recommended dilutions:

WB 1:500 - 1:2000

Source:

Rabbit

Isotype:

IgG

Purification:

Affinity purification

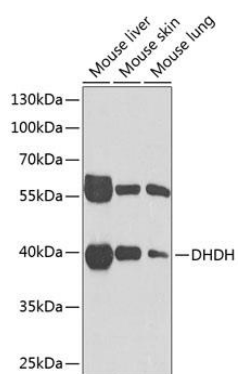
Immunogen:

Recombinant fusion protein containing a sequence corresponding to amino acids 1-334 of human DHDH (NP_055290.1).

Storage:

Store at -20°C. Avoid freeze / thaw cycles. Buffer: PBS with 0.02% sodium azide, 50% glycerol, pH7.3.

Product Images



Western blot analysis of extracts of various cell lines, using DHDH Antibody (CAB6577) at 1:1000 dilution. Secondary antibody: HRP Goat Anti-Rabbit IgG (H+L) (CABS014) at 1:10000 dilution. Lysates/proteins: 25ug per lane. Blocking buffer: 3% nonfat dry milk in TBST. Detection: ECL Basic Kit (CABM00020). Exposure time: 30s.