

DLK1 Rabbit Polyclonal Antibody



CAB6578

Product Information

Size:

20uL, 50uL, 100uL, 200uL

Observed MW:

45kDa

Calculated MW:

33kDa/41kDa

Applications:

WB IHC

Reactivity:

Human, Mouse

Protein Background

This gene encodes a transmembrane protein that contains multiple epidermal growth factor repeats that functions as a regulator of cell growth. The encoded protein is involved in the differentiation of several cell types including adipocytes. This gene is located in a region of chromosome 14 frequently showing uniparental disomy, and is imprinted and expressed from the paternal allele. A single nucleotide variant in this gene is associated with child and adolescent obesity and shows polar overdominance, where heterozygotes carrying an active paternal allele express the phenotype, while mutant homozygotes are normal.

Immunogen information

Gene ID:

8788

Uniprot

P80370

Synonyms:

DLK1; DLK; DLK-1; Delta1; FA1; PREF1; Pref-1; ZOG; pG2

Antibody Information

Recommended dilutions:

WB 1:500 - 1:2000 IHC 1:50
- 1:200

Source:

Rabbit

Isotype:

IgG

Purification:

Affinity purification

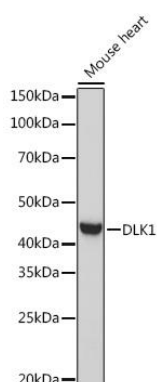
Immunogen:

Recombinant fusion protein containing a sequence corresponding to amino acids 83-383 of human DLK1 (NP_003827.3).

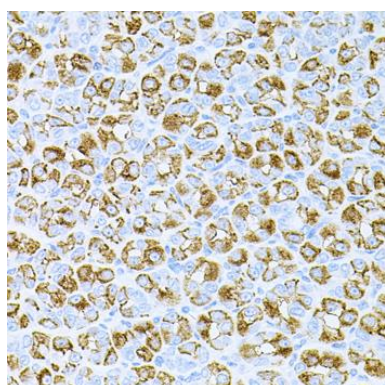
Storage:

Store at -20°C. Avoid freeze / thaw cycles. Buffer: PBS with 0.02% sodium azide, 50% glycerol, pH7.3.

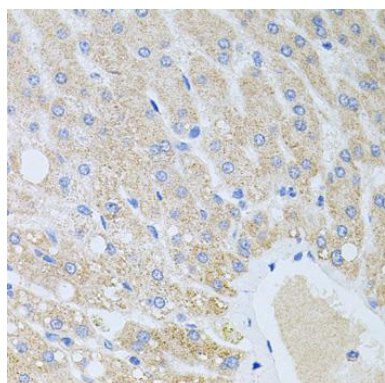
Product Images



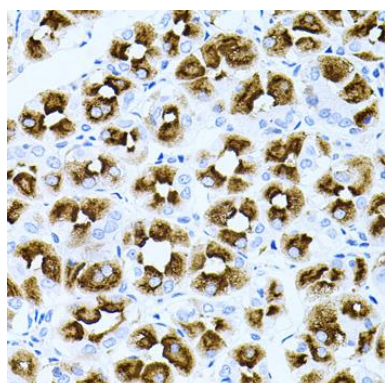
Western blot analysis of extracts of Mouse heart, using DLK1 Rabbit pAb (CAB6578) at 1:1000 dilution. Secondary antibody: HRP Goat Anti-Rabbit IgG (H+L) (CABS014) at 1:10000 dilution. Lysates/proteins: 25ug per lane. Blocking buffer: 3% nonfat dry milk in TBST. Detection: ECL Basic Kit (CABM00020). Exposure time: 180s.



Immunohistochemistry of paraffin-embedded mouse stomach using DLK1 antibody (CAB6578) at dilution of 1:100 (40x lens).



Immunohistochemistry of paraffin-embedded human liver damage using DLK1 antibody (CAB6578) at dilution of 1:100 (40x lens).



Immunohistochemistry of paraffin-embedded human stomach using DLK1 antibody (CAB6578) at dilution of 1:100 (40x lens).