

# DPP7 Rabbit Polyclonal Antibody



CAB6579

---

## Product Information

### Size:

20uL, 50uL, 100uL, 200uL

### Observed MW:

Refer to Figures

### Calculated MW:

54kDa

### Applications:

WB IF

### Reactivity:

Human

## Protein Background

The protein encoded by this gene is a post-proline cleaving aminopeptidase expressed in quiescent lymphocytes. The resting lymphocytes are maintained through suppression of apoptosis, a state which is disrupted by inhibition of this novel serine protease. The enzyme has strong sequence homology with prolylcarboxypeptidase and is active at both acidic and neutral pH.

## Immunogen information

### Gene ID:

29952

### Uniprot

Q9UHL4

### Synonyms:

DPP7; DPP2; DPPII; QPP

## Antibody Information

### Recommended dilutions:

WB 1:500 - 1:2000 IF 1:50 - 1:100

### Source:

Rabbit

### Isotype:

IgG

### Purification:

Affinity purification

### Immunogen:

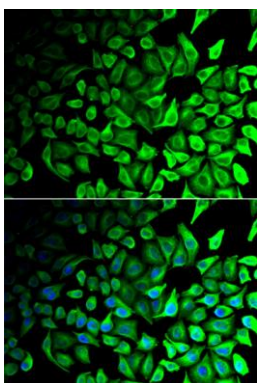
Recombinant fusion protein containing a sequence corresponding to amino acids 190-410 of human DPP7 (NP\_037511.2).

### Storage:

Store at -20°C. Avoid freeze / thaw cycles. Buffer: PBS with 0.02% sodium azide, 50% glycerol, pH7.3.

## Product Images

---



Immunofluorescence analysis of HeLa cells using DPP7 antibody (CAB6579). Blue: DAPI for nuclear staining.