

# EIF2S3 Rabbit Polyclonal Antibody



CAB6581

## Product Information

### Size:

20uL, 50uL, 100uL, 200uL

### Observed MW:

51kDa

### Calculated MW:

51kDa

### Applications:

WB IHC

### Reactivity:

Human, Mouse, Rat

## Antibody Information

### Recommended dilutions:

WB 1:500 - 1:2000 IHC 1:50  
- 1:200

### Source:

Rabbit

### Isotype:

IgG

### Purification:

Affinity purification

## Protein Background

The protein encoded by this gene is the largest subunit of a heterotrimeric GTP-binding protein involved in the recruitment of methionyl-tRNA(i) to the 40 S ribosomal subunit.

## Immunogen information

### Gene ID:

1968

### Uniprot

P41091

### Synonyms:

EIF2S3; EIF2; EIF2G; EIF2gamma; MRXSBRK; eIF-2gA

### Immunogen:

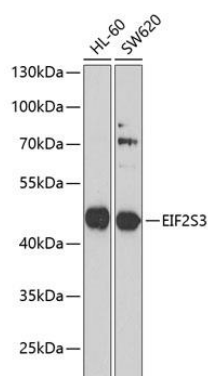
Recombinant fusion protein containing a sequence corresponding to amino acids 173-472 of human EIF2S3 (NP\_001406.1).

### Storage:

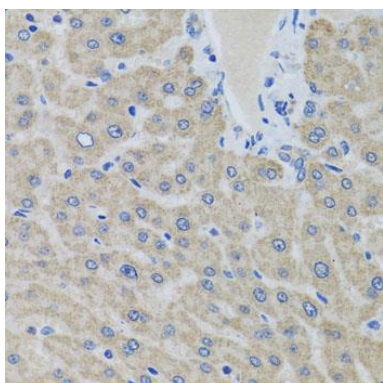
Store at -20°C. Avoid freeze / thaw cycles. Buffer: PBS with 0.02% sodium azide, 50% glycerol, pH7.3.

## Product Images

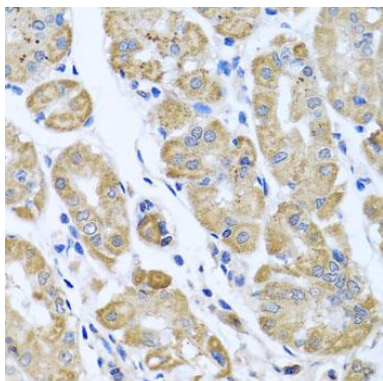
---



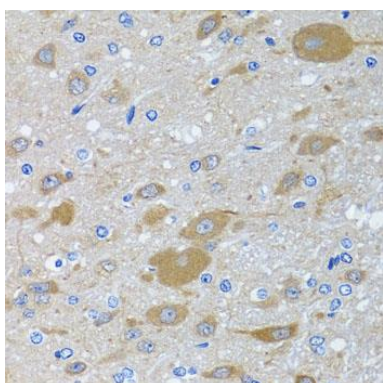
Western blot analysis of extracts of various cell lines, using EIF2S3 antibody (CAB6581) at 1:1000 dilution. Secondary antibody: HRP Goat Anti-Rabbit IgG (H+L) (CABS014) at 1:10000 dilution. Lysates/proteins: 25ug per lane. Blocking buffer: 3% nonfat dry milk in TBST. Detection: ECL Basic Kit (CABM00020). Exposure time: 90s.



Immunohistochemistry of paraffin-embedded human liver using EIF2S3 antibody (CAB6581) at dilution of 1:100 (40x lens).



Immunohistochemistry of paraffin-embedded human stomach using EIF2S3 antibody (CAB6581) at dilution of 1:100 (40x lens).



Immunohistochemistry of paraffin-embedded rat brain using EIF2S3 antibody (CAB6581) at dilution of 1:100 (40x lens).