

ENTPD2 Rabbit Polyclonal Antibody



CAB6584

Product Information

Size:

20uL, 50uL, 100uL, 200uL

Observed MW:

Refer to Figures

Calculated MW:

48kDa/51kDa/53kDa

Applications:

WB IF

Reactivity:

Human

Protein Background

The protein encoded by this gene is the type 2 enzyme of the ecto-nucleoside triphosphate diphosphohydrolase family (E-NTPDase). E-NTPDases are a family of ecto-nucleosidases that hydrolyze 5'-triphosphates. This ecto-ATPase is an integral membrane protein. Alternative splicing of this gene results in multiple transcript variants.

Immunogen information

Gene ID:

954

Uniprot

Q9Y5L3

Synonyms:

ENTPD2; CD39L1; NTPDase-2

Antibody Information

Recommended dilutions:

WB 1:500 - 1:2000 IF 1:50 - 1:100

Source:

Rabbit

Isotype:

IgG

Purification:

Affinity purification

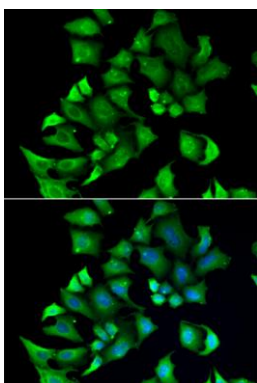
Immunogen:

Recombinant fusion protein containing a sequence corresponding to amino acids 28-268 of human ENTPD2 (NP_982293.1).

Storage:

Store at -20°C. Avoid freeze / thaw cycles. Buffer: PBS with 0.02% sodium azide, 50% glycerol, pH7.3.

Product Images



Immunofluorescence analysis of A549 cells using ENTPD2 antibody (CAB6584). Blue: DAPI for nuclear staining.