

# FCN1 Rabbit Polyclonal Antibody



CAB6587

## Product Information

### Size:

20uL, 50uL, 100uL, 200uL

### Observed MW:

38kDa

### Calculated MW:

35kDa

### Applications:

WB IHC

### Reactivity:

Human, Mouse, Rat

## Antibody Information

### Recommended dilutions:

WB 1:500 - 1:2000 IHC 1:50  
- 1:200

### Source:

Rabbit

### Isotype:

IgG

### Purification:

Affinity purification

## Protein Background

The ficolin family of proteins are characterized by the presence of a leader peptide, a short N-terminal segment, followed by a collagen-like region, and a C-terminal fibrinogen-like domain. The collagen-like and the fibrinogen-like domains are also found separately in other proteins such as complement protein C1q, C-type lectins known as collectins, and tenascins. However, all these proteins recognize different targets, and are functionally distinct. Ficolin 1 encoded by FCN1 is predominantly expressed in the peripheral blood leukocytes, and has been postulated to function as a plasma protein with elastin-binding activity.

## Immunogen information

### Gene ID:

2219

### Uniprot

O00602

### Synonyms:

FCN1; FCNM; ficolin-1

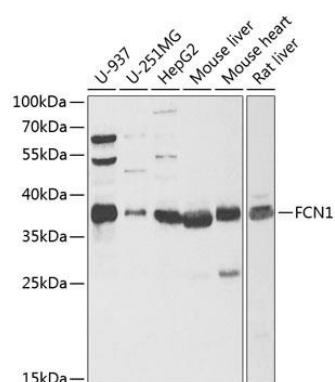
### Immunogen:

Recombinant fusion protein containing a sequence corresponding to amino acids 30-326 of human FCN1 (NP\_001994.2).

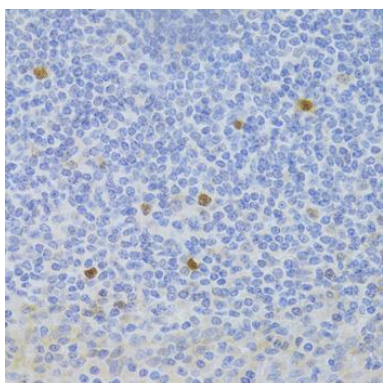
### Storage:

Store at -20°C. Avoid freeze / thaw cycles. Buffer: PBS with 0.02% sodium azide, 50% glycerol, pH7.3.

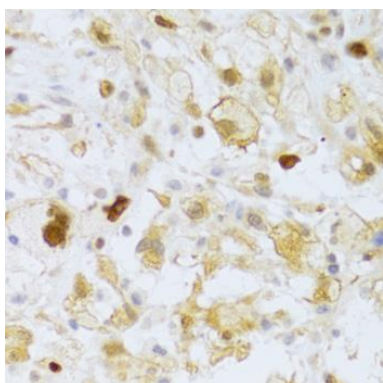
## Product Images



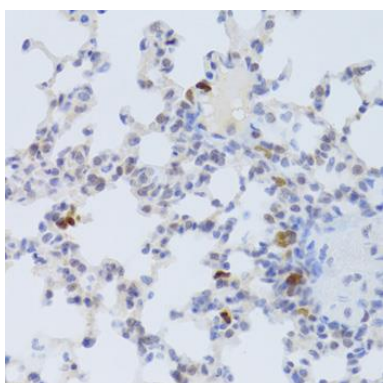
Western blot analysis of extracts of various cell lines, using FCN1 antibody (CAB6587) at 1:1000 dilution. Secondary antibody: HRP Goat Anti-Rabbit IgG (H+L) (CABS014) at 1:10000 dilution. Lysates/proteins: 25ug per lane. Blocking buffer: 3% nonfat dry milk in TBST. Detection: ECL Enhanced Kit (CABM00021). Exposure time: 90s.



Immunohistochemistry of paraffin-embedded human tonsil using FCN1 Antibody (CAB6587) at dilution of 1:100 (40x lens).



Immunohistochemistry of paraffin-embedded human brain astrocytoma using FCN1 Antibody (CAB6587) at dilution of 1:100 (40x lens).



Immunohistochemistry of paraffin-embedded mouse lung using FCN1 Antibody (CAB6587) at dilution of 1:100 (40x lens).