

GABBR2 Rabbit Polyclonal Antibody



CAB6594

Product Information

Size:

20uL, 50uL, 100uL, 200uL

Observed MW:

122kDa

Calculated MW:

105kDa

Applications:

WB

Reactivity:

Human

Protein Background

The multi-pass membrane protein encoded by this gene belongs to the G-protein coupled receptor 3 family and GABA-B receptor subfamily. The GABA-B receptors inhibit neuronal activity through G protein-coupled second-messenger systems, which regulate the release of neurotransmitters, and the activity of ion channels and adenylyl cyclase. This receptor subunit forms an active heterodimeric complex with GABA-B receptor subunit 1, neither of which is effective on its own. Allelic variants of this gene have been associated with nicotine dependence.

Immunogen information

Gene ID:

9568

Uniprot

O75899

Synonyms:

GABBR2; GABABR2; GPR51; GPRC3B; HG20; HRIHFB2099

Antibody Information

Recommended dilutions:

WB 1:500 - 1:2000

Source:

Rabbit

Isotype:

IgG

Purification:

Affinity purification

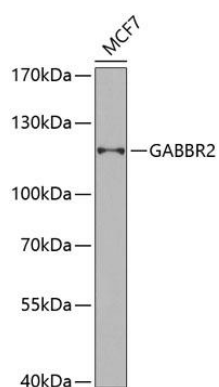
Immunogen:

Recombinant fusion protein containing a sequence corresponding to amino acids 60-310 of human GABBR2 (NP_005449.5).

Storage:

Store at -20°C. Avoid freeze / thaw cycles. Buffer: PBS with 0.02% sodium azide, 50% glycerol, pH7.3.

Product Images



Western blot analysis of extracts of MCF-7 cells, using GABBR2 antibody (CAB6594) at 1:1000 dilution. Secondary antibody: HRP Goat Anti-Rabbit IgG (H+L) (CABS014) at 1:10000 dilution. Lysates/proteins: 25ug per lane. Blocking buffer: 3% nonfat dry milk in TBST. Detection: ECL Basic Kit (CABM00020). Exposure time: 120s.