

# GAMT Rabbit Polyclonal Antibody



CAB6597

## Product Information

### Size:

20uL, 50uL, 100uL, 200uL

### Observed MW:

29kDa

### Calculated MW:

26kDa/29kDa

### Applications:

WB IHC IF

### Reactivity:

Human, Mouse, Rat

## Protein Background

The protein encoded by this gene is a methyltransferase that converts guanidoacetate to creatine, using S-adenosylmethionine as the methyl donor. Defects in this gene have been implicated in neurologic syndromes and muscular hypotonia, probably due to creatine deficiency and accumulation of guanidinoacetate in the brain of affected individuals. Two transcript variants encoding different isoforms have been described for this gene. Pseudogenes of this gene are found on chromosomes 2 and 13.

## Immunogen information

### Gene ID:

2593

### Uniprot

Q14353

### Synonyms:

GAMT; CCDS2; HEL-S-20; PIG2; TP53I2

## Antibody Information

### Recommended dilutions:

WB 1:500 - 1:2000 IHC 1:50  
- 1:200 IF 1:50 - 1:200

### Source:

Rabbit

### Isotype:

IgG

### Purification:

Affinity purification

### Immunogen:

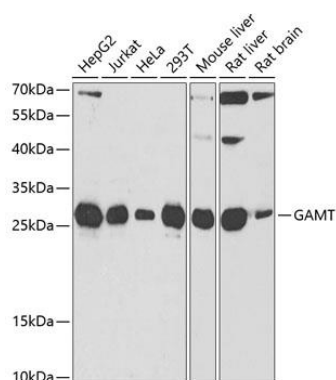
Recombinant fusion protein containing a sequence corresponding to amino acids 1-236 of human GAMT (NP\_000147.1).

### Storage:

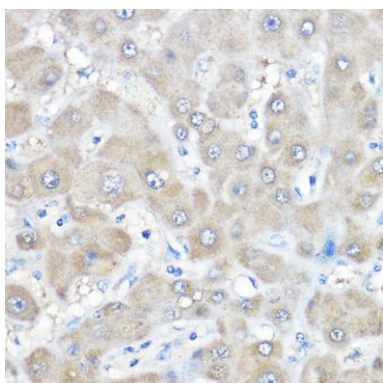
Store at -20°C. Avoid freeze / thaw cycles. Buffer: PBS with 0.02% sodium azide, 50% glycerol, pH7.3.

## Product Images

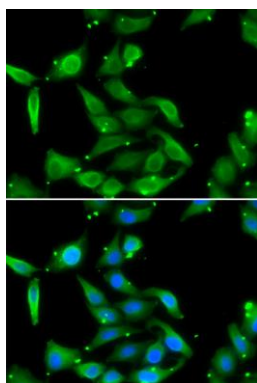
---



Western blot analysis of extracts of various cell lines, using GAMT antibody (CAB6597) at 1:1000 dilution. Secondary antibody: HRP Goat Anti-Rabbit IgG (H+L) (CABS014) at 1:10000 dilution. Lysates/proteins: 25ug per lane. Blocking buffer: 3% nonfat dry milk in TBST. Detection: ECL Basic Kit (CABM00020). Exposure time: 90s.



Immunohistochemistry of paraffin-embedded human liver using GAMT Rabbit pAb (CAB6597) at dilution of 1:500 (40x lens).



Immunofluorescence analysis of U2OS cells using GAMT antibody (CAB6597). Blue: DAPI for nuclear staining.