

# GDAP1 Rabbit Polyclonal Antibody



CAB6601

---

## Product Information

### Size:

20uL, 50uL, 100uL, 200uL

### Observed MW:

38kDa

### Calculated MW:

33kDa/41kDa

### Applications:

WB IHC

### Reactivity:

Human, Mouse, Rat

## Protein Background

This gene encodes a member of the ganglioside-induced differentiation-associated protein family, which may play a role in a signal transduction pathway during neuronal development. Mutations in this gene have been associated with various forms of Charcot-Marie-Tooth Disease and neuropathy. Two transcript variants encoding different isoforms and a noncoding variant have been identified for this gene.

## Immunogen information

### Gene ID:

54332

### Uniprot

Q8TB36

### Synonyms:

GDAP1; CMT4; CMT4A; CMTRIA

## Antibody Information

### Recommended dilutions:

WB 1:500 - 1:2000 IHC 1:50  
- 1:200

### Source:

Rabbit

### Isotype:

IgG

### Purification:

Affinity purification

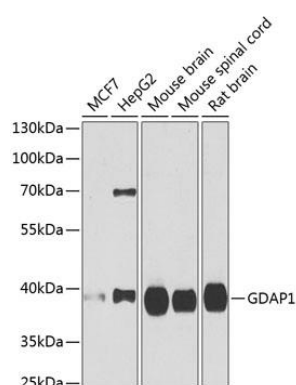
### Immunogen:

Recombinant fusion protein containing a sequence corresponding to amino acids 1-225 of human GDAP1 (NP\_001035808.1).

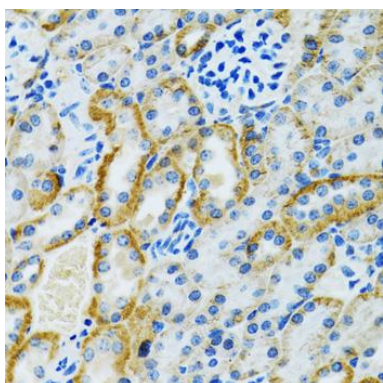
### Storage:

Store at -20°C. Avoid freeze / thaw cycles. Buffer: PBS with 0.02% sodium azide, 50% glycerol, pH7.3.

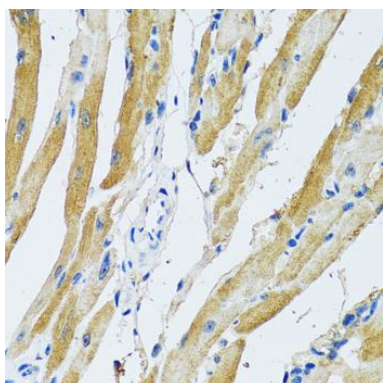
## Product Images



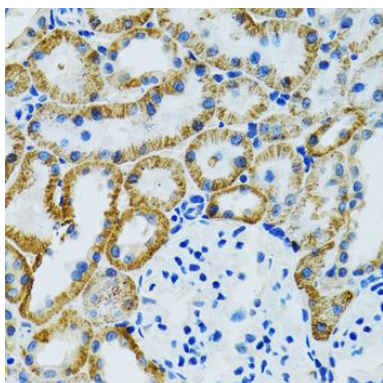
Western blot analysis of extracts of various cell lines, using GDAP1 antibody (CAB6601) at 1:1000 dilution. Secondary antibody: HRP Goat Anti-Rabbit IgG (H+L) (CABS014) at 1:10000 dilution. Lysates/proteins: 25ug per lane. Blocking buffer: 3% nonfat dry milk in TBST. Detection: ECL Basic Kit (CABM00020). Exposure time: 90s.



Immunohistochemistry of paraffin-embedded rat kidney using GDAP1 antibody (CAB6601) at dilution of 1:100 (40x lens).



Immunohistochemistry of paraffin-embedded rat heart using GDAP1 antibody (CAB6601) at dilution of 1:100 (40x lens).



Immunohistochemistry of paraffin-embedded mouse kidney using GDAP1 antibody (CAB6601) at dilution of 1:100 (40x lens).