

GLUD2 Rabbit Polyclonal Antibody



CAB6604

Product Information

Size:

20uL, 50uL, 100uL, 200uL

Observed MW:

55kDa

Calculated MW:

61kDa

Applications:

WB IHC IF

Reactivity:

Human, Mouse, Rat

Protein Background

The protein encoded by this gene is localized to the mitochondrion and acts as a homohexamer to recycle glutamate during neurotransmission. The encoded enzyme catalyzes the reversible oxidative deamination of glutamate to alpha-ketoglutarate. This gene is intronless.

Immunogen information

Gene ID:

2747

Uniprot

P49448

Synonyms:

GLUD2; GDH2; GLUDP1

Antibody Information

Recommended dilutions:

WB 1:500 - 1:2000 IHC 1:50
- 1:200 IF 1:10 - 1:100

Source:

Rabbit

Isotype:

IgG

Purification:

Affinity purification

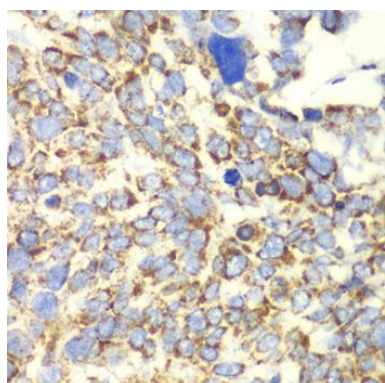
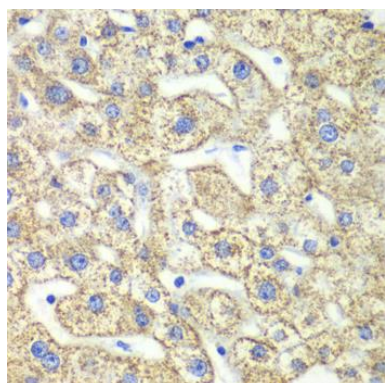
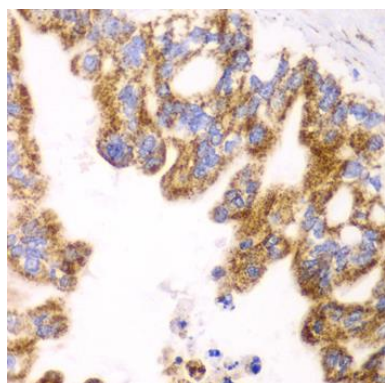
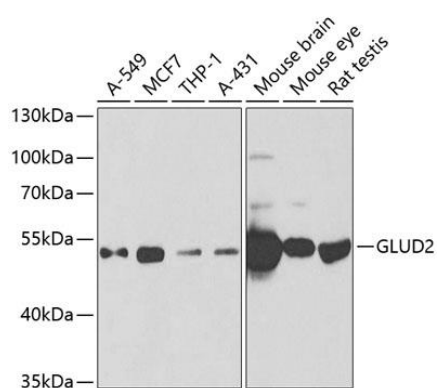
Immunogen:

Recombinant fusion protein containing a sequence corresponding to amino acids 319-558 of human GLUD2 (NP_036216.2).

Storage:

Store at -20°C. Avoid freeze / thaw cycles. Buffer: PBS with 0.02% sodium azide, 50% glycerol, pH7.3.

Product Images



Western blot analysis of extracts of various cell lines, using GLUD2 antibody (CAB6604) at 1:1000 dilution. Secondary antibody: HRP Goat Anti-Rabbit IgG (H+L) (CABS014) at 1:10000 dilution. Lysates/proteins: 25ug per lane. Blocking buffer: 3% nonfat dry milk in TBST. Detection: ECL Basic Kit (CABM00020). Exposure time: 90s.

Immunohistochemistry of paraffin-embedded human liver cancer using GLUD2 antibody (CAB6604) at dilution of 1:100 (40x lens).

Immunohistochemistry of paraffin-embedded human liver damage using GLUD2 antibody (CAB6604) at dilution of 1:100 (40x lens).

Immunohistochemistry of paraffin-embedded human esophageal cancer using GLUD2 antibody (CAB6604) at dilution of 1:100 (40x lens).