

GPAM Rabbit Polyclonal Antibody



CAB6610

Product Information

Size:

20uL, 50uL, 100uL, 200uL

Observed MW:

94kDa

Calculated MW:

93kDa

Applications:

WB IHC IP

Reactivity:

Human, Mouse, Rat

Protein Background

This gene encodes a mitochondrial enzyme which prefers saturated fatty acids as its substrate for the synthesis of glycerolipids. This metabolic pathway's first step is catalyzed by the encoded enzyme. Two forms for this enzyme exist, one in the mitochondria and one in the endoplasmic reticulum. Two alternatively spliced transcript variants have been described for this gene.

Immunogen information

Gene ID:

57678

Uniprot

Q9HCL2

Synonyms:

GPAM; GPAT; GPAT1

Antibody Information

Recommended dilutions:

WB 1:500 - 1:2000 IHC 1:50
- 1:200 IP 1:50 - 1:200

Source:

Rabbit

Isotype:

IgG

Purification:

Affinity purification

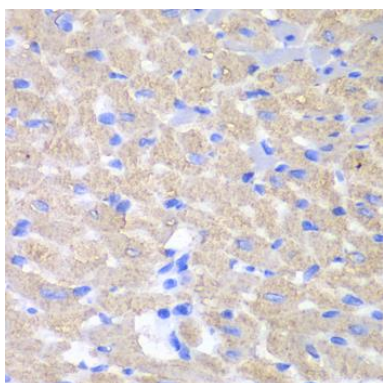
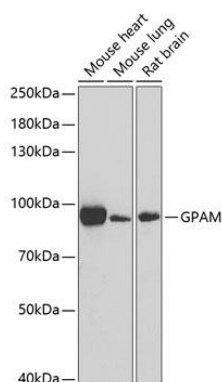
Immunogen:

Recombinant fusion protein containing a sequence corresponding to amino acids 594-828 of human GPAM (NP_001231878.1).

Storage:

Store at -20°C. Avoid freeze / thaw cycles. Buffer: PBS with 0.02% sodium azide, 50% glycerol, pH7.3.

Product Images



Western blot analysis of extracts of various cell lines, using GPAM antibody (CAB6610) at 1:1000 dilution. Secondary antibody: HRP Goat Anti-Rabbit IgG (H+L) (CABS014) at 1:10000 dilution. Lysates/proteins: 25ug per lane. Blocking buffer: 3% nonfat dry milk in TBST. Detection: ECL Basic Kit (CABM00020). Exposure time: 30s.

Immunohistochemistry of paraffin-embedded mouse heart using GPAM antibody (CAB6610) at dilution of 1:100 (40x lens).