

# GPD2 Rabbit Polyclonal Antibody



CAB6611

## Product Information

### Size:

20uL, 50uL, 100uL, 200uL

### Observed MW:

81kDa

### Calculated MW:

67kDa/80kDa

### Applications:

WB IHC

### Reactivity:

Human, Mouse, Rat

## Protein Background

The protein encoded by this gene localizes to the inner mitochondrial membrane and catalyzes the conversion of glycerol-3-phosphate to dihydroxyacetone phosphate, using FAD as a cofactor. Along with GDP1, the encoded protein constitutes the glycerol phosphate shuttle, which reoxidizes NADH formed during glycolysis. Two transcript variants encoding the same protein have been found for this gene.

## Immunogen information

### Gene ID:

2820

### Uniprot

P43304

### Synonyms:

GPD2; GDH2; GPDM; mGPDH

## Antibody Information

### Recommended dilutions:

WB 1:500 - 1:2000 IHC 1:50  
- 1:200

### Source:

Rabbit

### Isotype:

IgG

### Purification:

Affinity purification

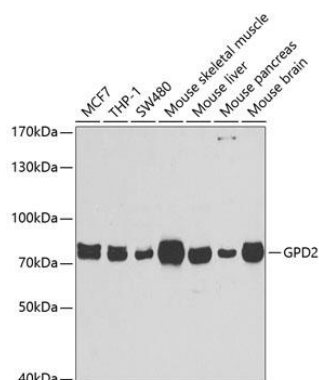
### Immunogen:

Recombinant fusion protein containing a sequence corresponding to amino acids 25-325 of human GPD2 (NP\_000399.3).

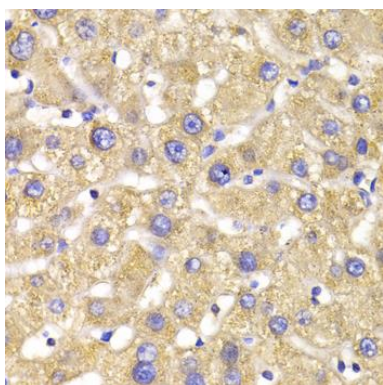
### Storage:

Store at -20°C. Avoid freeze / thaw cycles. Buffer: PBS with 0.02% sodium azide, 50% glycerol, pH7.3.

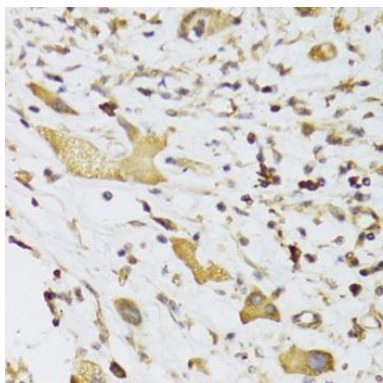
## Product Images



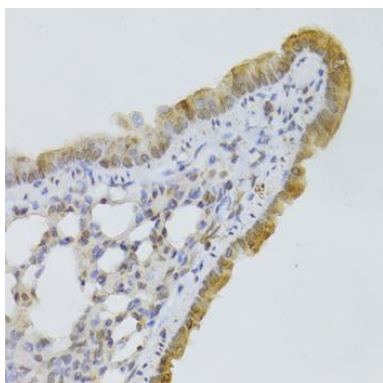
Western blot analysis of extracts of various cell lines, using GPD2 antibody (CAB6611) at 1:1000 dilution. Secondary antibody: HRP Goat Anti-Rabbit IgG (H+L) (CABS014) at 1:10000 dilution. Lysates/proteins: 25ug per lane. Blocking buffer: 3% nonfat dry milk in TBST. Detection: ECL Basic Kit (CABM00020). Exposure time: 10s.



Immunohistochemistry of paraffin-embedded human liver damage using GPD2 Antibody (CAB6611) at dilution of 1:100 (40x lens).



Immunohistochemistry of paraffin-embedded human liver cancer using GPD2 Antibody (CAB6611) at dilution of 1:100 (40x lens).



Immunohistochemistry of paraffin-embedded mouse lung using GPD2 Antibody (CAB6611) at dilution of 1:100 (40x lens).