

GTF2IRD1 Rabbit Polyclonal Antibody



CAB6613

Product Information

Size:

20uL, 50uL, 100uL, 200uL

Observed MW:

106kDa

Calculated MW:

104kDa/106kDa/107kDa

Applications:

WB

Reactivity:

Human, Mouse, Rat

Antibody Information

Recommended dilutions:

WB 1:500 - 1:2000

Source:

Rabbit

Isotype:

IgG

Purification:

Affinity purification

Protein Background

The protein encoded by this gene contains five GTF2I-like repeats and each repeat possesses a potential helix-loop-helix (HLH) motif. It may have the ability to interact with other HLH-proteins and function as a transcription factor or as a positive transcriptional regulator under the control of Retinoblastoma protein. This gene plays a role in craniofacial and cognitive development and mutations have been associated with Williams-Beuren syndrome, a multisystem developmental disorder caused by deletion of multiple genes at 7q11.23. Alternative splicing results in multiple transcript variants.

Immunogen information

Gene ID:

9569

Uniprot

Q9UHL9

Synonyms:

GTF2IRD1; BEN; CREAM1; GTF3; MUSTRD1; RBAP2; WBS; WBSR11; WBSR12

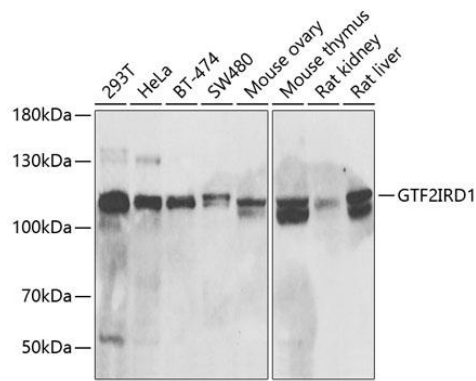
Immunogen:

Recombinant fusion protein containing a sequence corresponding to amino acids 660-959 of human GTF2IRD1 (NP_057412.1).

Storage:

Store at -20°C. Avoid freeze / thaw cycles. Buffer: PBS with 0.02% sodium azide, 50% glycerol, pH7.3.

Product Images



Western blot analysis of extracts of various cell lines, using GTF2IRD1 antibody (CAB6613) at 1:1000 dilution. Secondary antibody: HRP Goat Anti-Rabbit IgG (H+L) (CABS014) at 1:10000 dilution. Lysates/proteins: 25ug per lane. Blocking buffer: 3% nonfat dry milk in TBST. Detection: ECL Enhanced Kit (CABM00021). Exposure time: 5min.