

HAPLN1 Rabbit Polyclonal Antibody



CAB6616

Product Information

Size:

20uL, 50uL, 100uL, 200uL

Observed MW:

50kDa

Calculated MW:

40kDa

Applications:

WB IHC IF

Reactivity:

Human, Mouse

Antibody Information

Recommended dilutions:

WB 1:500 - 1:2000 IHC 1:50
- 1:200 IF 1:10 - 1:100

Source:

Rabbit

Isotype:

IgG

Purification:

Affinity purification

Protein Background

Immunogen information

Gene ID:

1404

Uniprot

P10915

Synonyms:

HAPLN1; CRT1; CRTL1

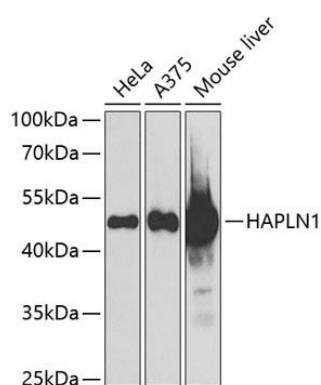
Immunogen:

Recombinant fusion protein containing a sequence corresponding to amino acids 165-354 of human HAPLN1 (NP_001875.1).

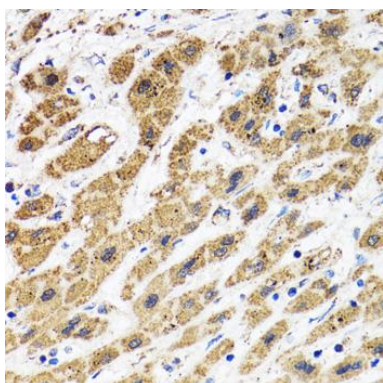
Storage:

Store at -20°C. Avoid freeze / thaw cycles. Buffer: PBS with 0.02% sodium azide, 50% glycerol, pH7.3.

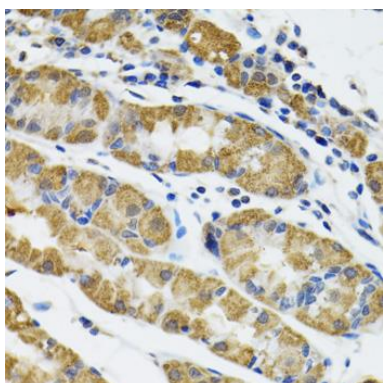
Product Images



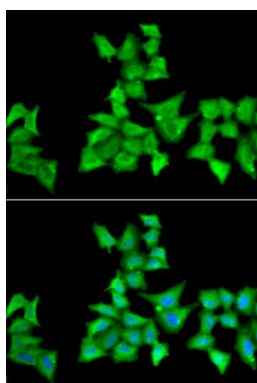
Western blot analysis of extracts of various cell lines, using HAPLN1 antibody (CAB6616) at 1:1000 dilution. Secondary antibody: HRP Goat Anti-Rabbit IgG (H+L) (CABS014) at 1:10000 dilution. Lysates/proteins: 25ug per lane. Blocking buffer: 3% nonfat dry milk in TBST. Detection: ECL Basic Kit (CABM00020). Exposure time: 90s.



Immunohistochemistry of paraffin-embedded human liver cancer using HAPLN1 antibody (CAB6616) at dilution of 1:100 (40x lens).



Immunohistochemistry of paraffin-embedded human stomach using HAPLN1 antibody (CAB6616) at dilution of 1:100 (40x lens).



Immunofluorescence analysis of A549 cells using HAPLN1 antibody (CAB6616). Blue: DAPI for nuclear staining.