

HSPH1 Rabbit Polyclonal Antibody



CAB6622

Product Information

Size:

20uL, 50uL, 100uL, 200uL

Observed MW:

120kDa

Calculated MW:

92kDa/96kDa/97kDa

Applications:

WB IHC

Reactivity:

Human, Mouse, Rat

Protein Background

This gene encodes a member of the heat shock protein 70 family of proteins. The encoded protein functions as a nucleotide exchange factor for the molecular chaperone heat shock cognate 71 kDa protein (Hsc70). In addition, this protein plays a distinct but related role as a holdase that inhibits the aggregation of misfolded proteins, including the cystic fibrosis transmembrane conductance regulator (CFTR) protein. Elevated expression of this protein has been observed in numerous human cancers.

Immunogen information

Gene ID:

10808

Uniprot

Q92598

Synonyms:

HSPH1; HSP105; HSP105A; HSP105B; NY-CO-25

Antibody Information

Recommended dilutions:

WB 1:500 - 1:2000 IHC 1:50
- 1:200

Source:

Rabbit

Isotype:

IgG

Purification:

Affinity purification

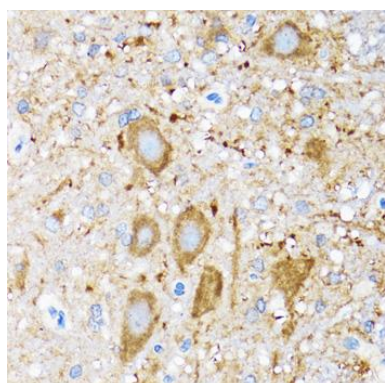
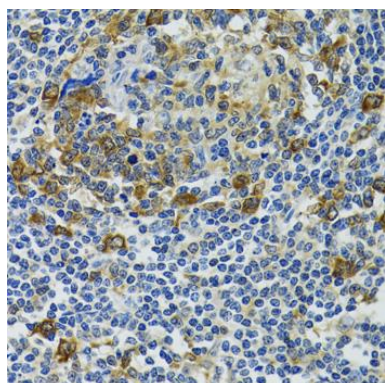
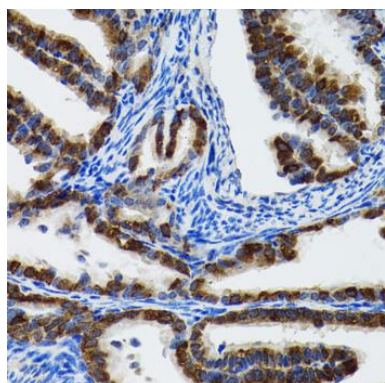
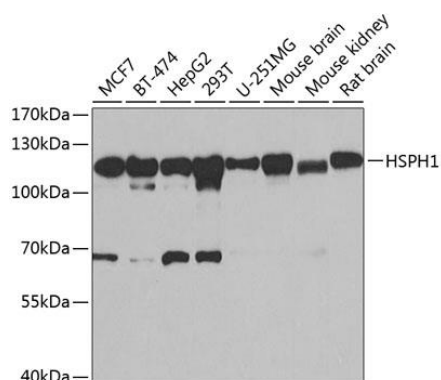
Immunogen:

Recombinant fusion protein containing a sequence corresponding to amino acids 659-858 of human HSPH1 (NP_006635.2).

Storage:

Store at -20°C. Avoid freeze / thaw cycles. Buffer: PBS with 0.02% sodium azide, 50% glycerol, pH7.3.

Product Images



Western blot analysis of extracts of various cell lines, using HSPH1 antibody (CAB6622) at 1:1000 dilution. Secondary antibody: HRP Goat Anti-Rabbit IgG (H+L) (CABS014) at 1:10000 dilution. Lysates/proteins: 25ug per lane. Blocking buffer: 3% nonfat dry milk in TBST. Detection: ECL Basic Kit (CABM00020). Exposure time: 1s.

Immunohistochemistry of paraffin-embedded rat fallopian tube using HSPH1 antibody (CAB6622) at dilution of 1:100 (40x lens).

Immunohistochemistry of paraffin-embedded human tonsil using HSPH1 antibody (CAB6622) at dilution of 1:100 (40x lens).

Immunohistochemistry of paraffin-embedded mouse spinal cord using HSPH1 antibody (CAB6622) at dilution of 1:100 (40x lens).