

HYAL1 Rabbit Polyclonal Antibody



CAB6623

Product Information

Size:

20uL, 50uL, 100uL, 200uL

Observed MW:

48kDa

Calculated MW:

10kDa/19kDa/23kDa/27kDa/
37kDa/45kDa/48kDa

Applications:

WB IHC

Reactivity:

Human, Mouse, Rat

Antibody Information

Recommended dilutions:

WB 1:500 - 1:2000 IHC 1:50
- 1:200

Source:

Rabbit

Isotype:

IgG

Purification:

Affinity purification

Protein Background

This gene encodes a lysosomal hyaluronidase. Hyaluronidases intracellularly degrade hyaluronan, one of the major glycosaminoglycans of the extracellular matrix. Hyaluronan is thought to be involved in cell proliferation, migration and differentiation. This enzyme is active at an acidic pH and is the major hyaluronidase in plasma. Mutations in this gene are associated with mucopolysaccharidosis type IX, or hyaluronidase deficiency. The gene is one of several related genes in a region of chromosome 3p21.3 associated with tumor suppression. Multiple transcript variants encoding different isoforms have been found for this gene.

Immunogen information

Gene ID:

3373

Uniprot

Q12794

Synonyms:

HYAL1; HYAL-1; LUCA1; MPS9; NAT6

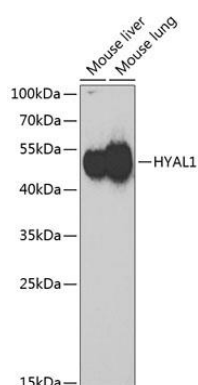
Immunogen:

Recombinant fusion protein containing a sequence corresponding to amino acids 136-435 of human HYAL1 (NP_149349.2).

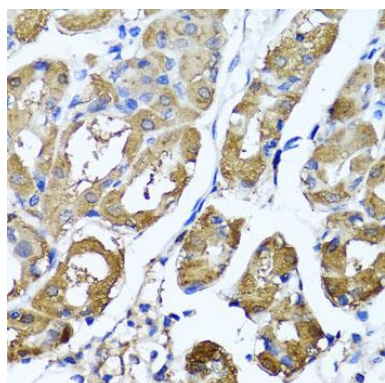
Storage:

Store at -20°C. Avoid freeze / thaw cycles. Buffer: PBS with 0.02% sodium azide, 50% glycerol, pH7.3.

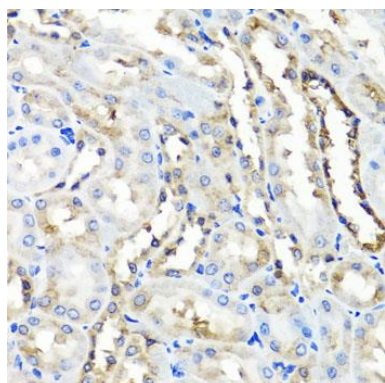
Product Images



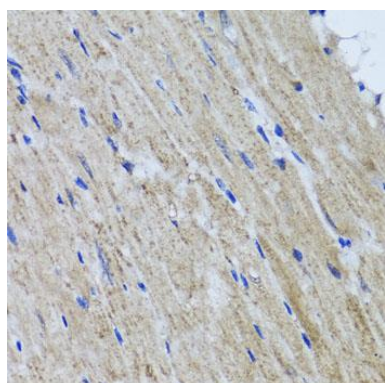
Western blot analysis of extracts of various cell lines, using HYAL1 Antibody (CAB6623) at 1:1000 dilution. Secondary antibody: HRP Goat Anti-Rabbit IgG (H+L) (CABS014) at 1:10000 dilution. Lysates/proteins: 25ug per lane. Blocking buffer: 3% nonfat dry milk in TBST. Detection: ECL Basic Kit (CABM00020). Exposure time: 90s.



Immunohistochemistry of paraffin-embedded human stomach using HYAL1 antibody (CAB6623) at dilution of 1:100 (40x lens).



Immunohistochemistry of paraffin-embedded rat kidney using HYAL1 antibody (CAB6623) at dilution of 1:100 (40x lens).



Immunohistochemistry of paraffin-embedded mouse heart using HYAL1 antibody (CAB6623) at dilution of 1:100 (40x lens).