

# IL20 Rabbit Polyclonal Antibody



CAB6629

## Product Information

### Size:

20uL, 50uL, 100uL, 200uL

### Observed MW:

20kDa

### Calculated MW:

17kDa/20kDa

### Applications:

WB IHC IF

### Reactivity:

Human, Mouse

## Protein Background

The protein encoded by this gene is a cytokine structurally related to interleukin 10 (IL10). This cytokine has been shown to transduce its signal through signal transducer and activator of transcription 3 (STAT3) in keratinocytes. A specific receptor for this cytokine is found to be expressed in skin and upregulated dramatically in psoriatic skin, suggesting a role for this protein in epidermal function and psoriasis.

## Immunogen information

### Gene ID:

50604

### Uniprot

Q9NYY1

### Synonyms:

IL20; IL-20; IL10D; ZCYTO10

## Antibody Information

### Recommended dilutions:

WB 1:500 - 1:2000 IHC 1:50  
- 1:100 IF 1:50 - 1:100

### Source:

Rabbit

### Isotype:

IgG

### Purification:

Affinity purification

### Immunogen:

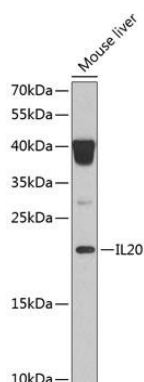
Recombinant fusion protein containing a sequence corresponding to amino acids 25-176 of human IL20 (NP\_061194.2).

### Storage:

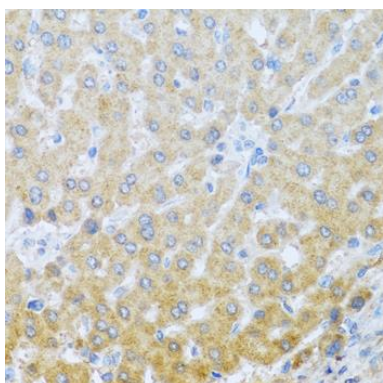
Store at -20°C. Avoid freeze / thaw cycles. Buffer: PBS with 0.02% sodium azide, 50% glycerol, pH7.3.

## Product Images

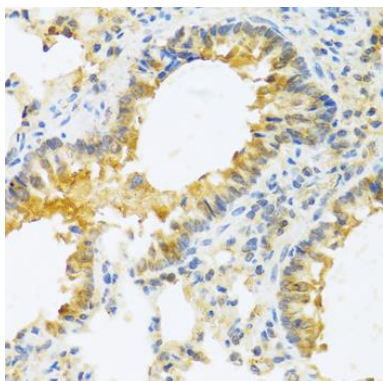
---



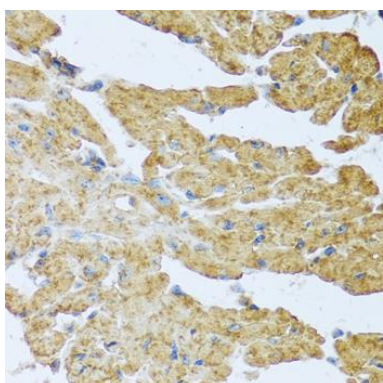
Western blot analysis of extracts of mouse liver, using IL20 Antibody (CAB6629) at 1:1000 dilution. Secondary antibody: HRP Goat Anti-Rabbit IgG (H+L) (CABS014) at 1:10000 dilution. Lysates/proteins: 25ug per lane. Blocking buffer: 3% nonfat dry milk in TBST. Detection: ECL Basic Kit (CABM00020). Exposure time: 90s.



Immunohistochemistry of paraffin-embedded human liver using IL20 antibody (CAB6629) at dilution of 1:100 (40x lens).



Immunohistochemistry of paraffin-embedded mouse lung using IL20 antibody (CAB6629) at dilution of 1:100 (40x lens).



Immunohistochemistry of paraffin-embedded mouse heart using IL20 antibody (CAB6629) at dilution of 1:100 (40x lens).