

INPP5J Rabbit Polyclonal Antibody



CAB6631

Product Information

Size:

20uL, 50uL, 100uL, 200uL

Observed MW:

107kDa

Calculated MW:

70kDa/107kDa

Applications:

WB IHC IF

Reactivity:

Human, Mouse, Rat

Antibody Information

Recommended dilutions:

WB 1:500 - 1:2000 IHC 1:50
- 1:100 IF 1:10 - 1:100

Source:

Rabbit

Isotype:

IgG

Purification:

Affinity purification

Protein Background

Immunogen information

Gene ID:

27124

Uniprot

Q15735

Synonyms:

INPP5J; INPP5; PIB5PA; PIPP

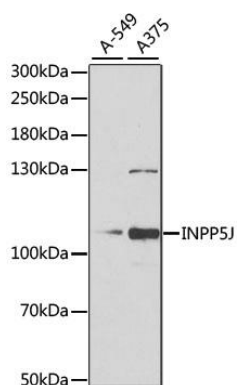
Immunogen:

Recombinant fusion protein containing a sequence corresponding to amino acids 60-360 of human INPP5J (NP_001002837.1).

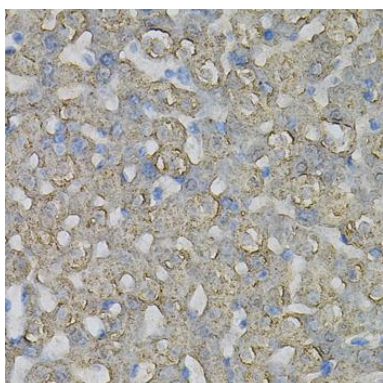
Storage:

Store at -20°C. Avoid freeze / thaw cycles. Buffer: PBS with 0.02% sodium azide, 50% glycerol, pH7.3.

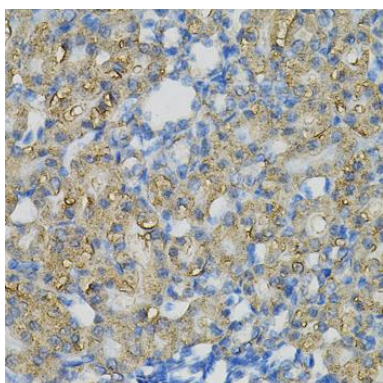
Product Images



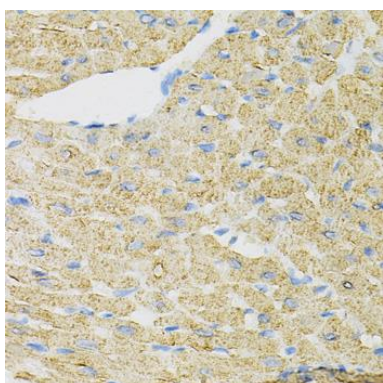
Western blot analysis of extracts of various cell lines, using INPP5J antibody (CAB6631) at 1:1000 dilution. Secondary antibody: HRP Goat Anti-Rabbit IgG (H+L) (CABS014) at 1:10000 dilution. Lysates/proteins: 25ug per lane. Blocking buffer: 3% nonfat dry milk in TBST. Detection: ECL Basic Kit (CABM00020). Exposure time: 90s.



Immunohistochemistry of paraffin-embedded rat liver using INPP5J Antibody (CAB6631) at dilution of 1:100 (40x lens).



Immunohistochemistry of paraffin-embedded rat kidney using INPP5J Antibody (CAB6631) at dilution of 1:100 (40x lens).



Immunohistochemistry of paraffin-embedded mouse heart using INPP5J Antibody (CAB6631) at dilution of 1:100 (40x lens).