

# INTS10 Rabbit Polyclonal Antibody



CAB6632

---

## Product Information

### Size:

20uL, 50uL, 100uL, 200uL

### Observed MW:

70-75kDa

### Calculated MW:

82kDa

### Applications:

WB

### Reactivity:

Human, Mouse, Rat

## Antibody Information

### Recommended dilutions:

WB 1:500 - 1:2000

### Source:

Rabbit

### Isotype:

IgG

### Purification:

Affinity purification

## Protein Background

### Immunogen information

#### Gene ID:

55174

#### Uniprot

Q9NVR2

#### Synonyms:

INTS10; C8orf35; INT10

#### Immunogen:

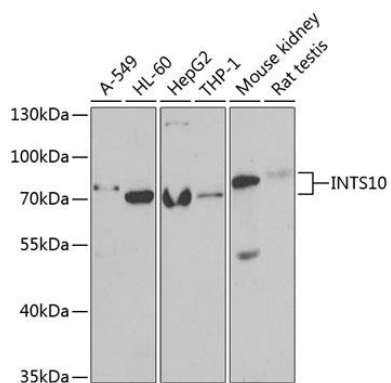
Recombinant fusion protein containing a sequence corresponding to amino acids 451-710 of human INTS10 (NP\_060612.2).

#### Storage:

Store at -20°C. Avoid freeze / thaw cycles. Buffer: PBS with 0.02% sodium azide, 50% glycerol, pH7.3.

## Product Images

---



Western blot analysis of extracts of various cell lines, using INTS10 antibody (CAB6632) at 1:1000 dilution. Secondary antibody: HRP Goat Anti-Rabbit IgG (H+L) (CABS014) at 1:10000 dilution. Lysates/proteins: 25ug per lane. Blocking buffer: 3% nonfat dry milk in TBST. Detection: ECL Basic Kit (CABM00020). Exposure time: 90s.