

# INTS6 Rabbit Polyclonal Antibody



CAB6634

## Product Information

### Size:

20uL, 50uL, 100uL, 200uL

### Observed MW:

115kDa

### Calculated MW:

12kDa/98kDa/100kDa

### Applications:

WB IHC IF

### Reactivity:

Human, Mouse

## Antibody Information

### Recommended dilutions:

WB 1:500 - 1:2000 IHC 1:50  
- 1:200 IF 1:50 - 1:200

### Source:

Rabbit

### Isotype:

IgG

### Purification:

Affinity purification

## Protein Background

DEAD box proteins, characterized by the conserved motif Asp-Glu-Ala-Asp (DEAD), are putative RNA helicases. The protein encoded by this gene is a DEAD box protein that is part of a complex that interacts with the C-terminus of RNA polymerase II and is involved in 3' end processing of snRNAs. In addition, this gene is a candidate tumor suppressor and is located in the critical region of loss of heterozygosity (LOH). Multiple transcript variants encoding different isoforms have been found for this gene.

## Immunogen information

### Gene ID:

26512

### Uniprot

Q9UL03

### Synonyms:

INTS6; DBI-1; DDX26; DDX26A; DICE1; HDB; INT6; Notch12

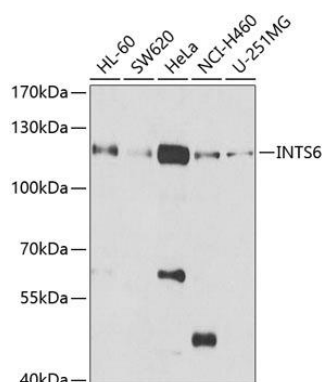
### Immunogen:

Recombinant fusion protein containing a sequence corresponding to amino acids 1-280 of human INTS6 (NP\_036273.1).

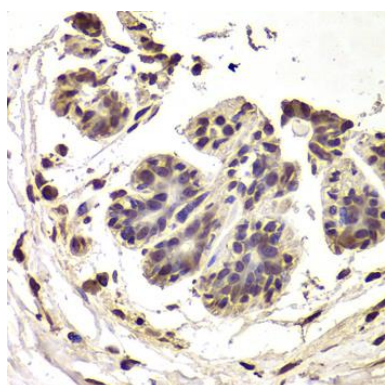
### Storage:

Store at -20°C. Avoid freeze / thaw cycles. Buffer: PBS with 0.02% sodium azide, 50% glycerol, pH7.3.

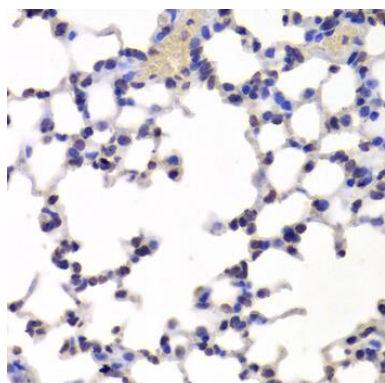
## Product Images



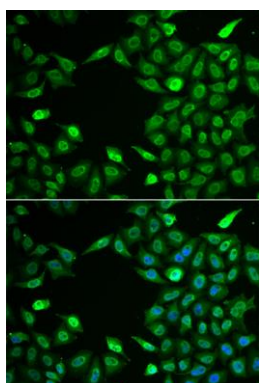
Western blot analysis of extracts of various cell lines, using INTS6 antibody (CAB6634) at 1:1000 dilution. Secondary antibody: HRP Goat Anti-Rabbit IgG (H+L) (CABS014) at 1:10000 dilution. Lysates/proteins: 25ug per lane. Blocking buffer: 3% nonfat dry milk in TBST. Detection: ECL Basic Kit (CABM00020). Exposure time: 90s.



Immunohistochemistry of paraffin-embedded human breast cancer using INTS6 Antibody (CAB6634) at dilution of 1:100 (40x lens).



Immunohistochemistry of paraffin-embedded mouse lung using INTS6 Antibody (CAB6634) at dilution of 1:100 (40x lens).



Immunofluorescence analysis of A549 cells using INTS6 antibody (CAB6634). Blue: DAPI for nuclear staining.