

# KHDRBS3 Rabbit Polyclonal Antibody



CAB6637

## Product Information

### Size:

20uL, 50uL, 100uL, 200uL

### Observed MW:

39kDa

### Calculated MW:

30kDa/38kDa

### Applications:

WB IF

### Reactivity:

Human, Mouse

## Antibody Information

### Recommended dilutions:

WB 1:500 - 1:2000 IF 1:50 - 1:100

### Source:

Rabbit

### Isotype:

IgG

### Purification:

Affinity purification

## Protein Background

### Immunogen information

#### Gene ID:

10656

#### Uniprot

O75525

#### Synonyms:

KHDRBS3; Etle; SALP; SLM-2; SLM2; T-STAR; TSTAR; etoile

#### Immunogen:

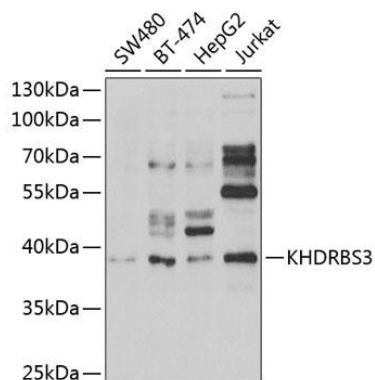
Recombinant fusion protein containing a sequence corresponding to amino acids 177-346 of human KHDRBS3 (NP\_006549.1).

#### Storage:

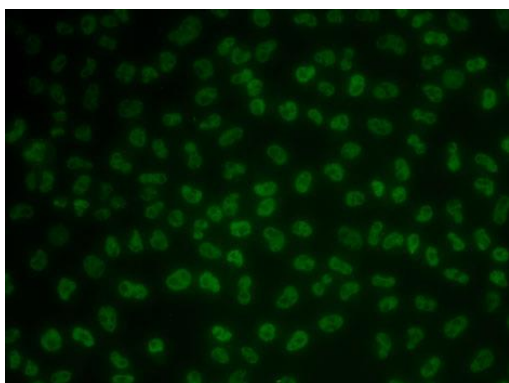
Store at -20°C. Avoid freeze / thaw cycles. Buffer: PBS with 0.02% sodium azide, 50% glycerol, pH7.3.

## Product Images

---



Western blot analysis of extracts of various cell lines, using KHDRBS3 antibody (CAB6637) at 1:1000 dilution. Secondary antibody: HRP Goat Anti-Rabbit IgG (H+L) (CABS014) at 1:10000 dilution. Lysates/proteins: 25ug per lane. Blocking buffer: 3% nonfat dry milk in TBST. Detection: ECL Enhanced Kit (CABM00021). Exposure time: 90s.



Immunofluorescence analysis of MCF7 cells using KHDRBS3 antibody (CAB6637).