

KLK11 Rabbit Polyclonal Antibody



CAB6641

Product Information

Size:

20uL, 50uL, 100uL, 200uL

Observed MW:

50kDa

Calculated MW:

27kDa/30kDa/31kDa/33kDa

Applications:

WB IHC

Reactivity:

Human, Mouse

Antibody Information

Recommended dilutions:

WB 1:500 - 1:2000 IHC
1:100 - 1:200

Source:

Rabbit

Isotype:

IgG

Purification:

Affinity purification

Protein Background

Kallikreins are a subgroup of serine proteases having diverse physiological functions. Growing evidence suggests that many kallikreins are implicated in carcinogenesis and some have potential as novel cancer and other disease biomarkers. This gene is one of the fifteen kallikrein subfamily members located in a cluster on chromosome 19. Alternate splicing and the use of alternate promoters results in multiple transcript variants encoding distinct isoforms which are differentially expressed.

Immunogen information

Gene ID:

11012

Uniprot

Q9UBX7

Synonyms:

KLK11; PRSS20; TLSP

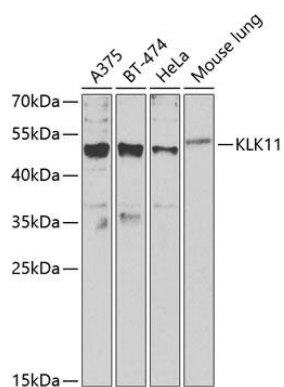
Immunogen:

Recombinant fusion protein containing a sequence corresponding to amino acids 1-250 of human KLK11 (NP_001129504.1).

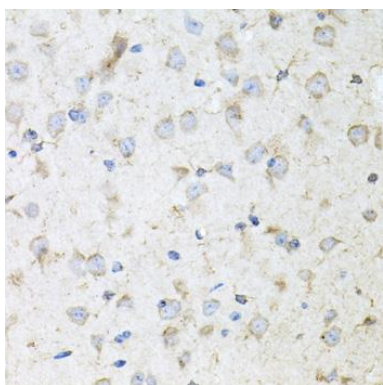
Storage:

Store at -20°C. Avoid freeze / thaw cycles. Buffer: PBS with 0.02% sodium azide, 50% glycerol, pH7.3.

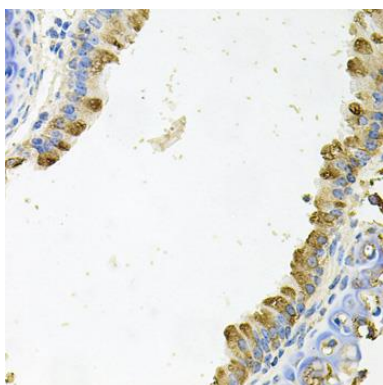
Product Images



Western blot analysis of extracts of various cell lines, using KLK11 Antibody (CAB6641) at 1:1000 dilution. Secondary antibody: HRP Goat Anti-Rabbit IgG (H+L) (CABS014) at 1:10000 dilution. Lysates/proteins: 25ug per lane. Blocking buffer: 3% nonfat dry milk in TBST. Detection: ECL Enhanced Kit (CABM00021). Exposure time: 20s.



Immunohistochemistry of paraffin-embedded mouse brain using KLK11 antibody (CAB6641) at dilution of 1:100 (40x lens).



Immunohistochemistry of paraffin-embedded mouse lung using KLK11 antibody (CAB6641) at dilution of 1:100 (40x lens).